

HAGOOD | HOMES



Dream Home Guide

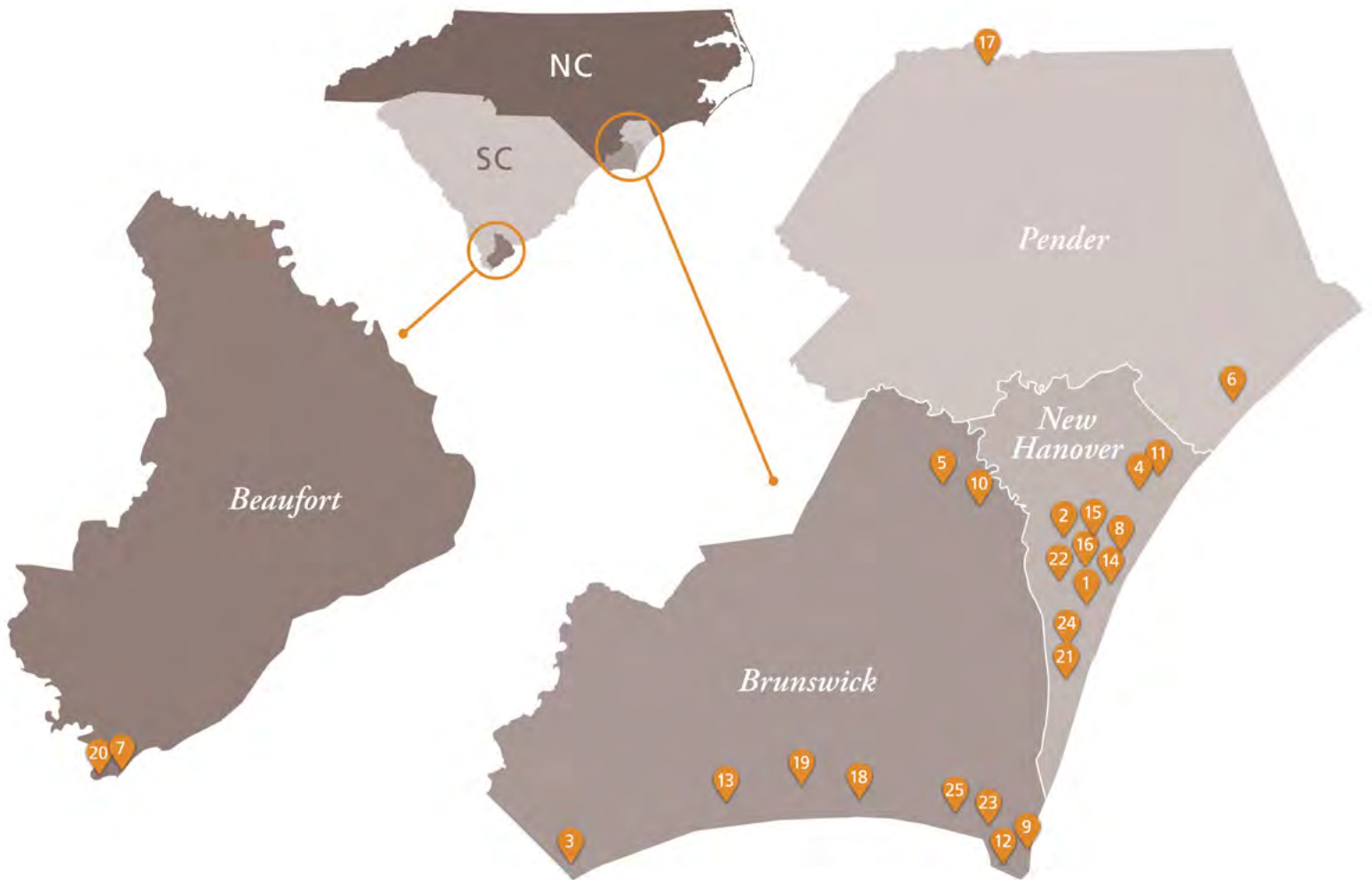




Where We Build.....	PAGE 4
Area Guides	
Leland and Brunswick County	PAGE 5
Wilmington & New Hanover County.....	PAGE 10
About	PAGE 16
Hagood Difference.....	PAGE 17
Process	PAGE 30
Floor Plans	PAGE 33
Design Selections	PAGE 76

WHERE WE BUILD

We specialize in comprehensive on-your-lot home building, but also build in numerous resort-style communities throughout the coastal Carolinas. Below is a sampling of the communities we've built in over the last 25 years.



Communities

- | | | |
|---------------------------|--|------------------------------|
| 1. Airlie Forest | 11. Marsh Oaks | 20. Sea Pines |
| 2. Autumn Hall | 12. Navigation Point at South Harbor Village | 21. Sentry Oaks |
| 3. Brunswick Plantation | 13. Ocean Isle Palms | 22. Southern Oaks |
| 4. Catherine's Cove | 14. One Meeting Place | 23. St. James Plantation |
| 5. Compass Point | 15. Parkside at Mayfaire | 24. Stratton Village |
| 6. Eagles Watch | 16. Pointe Summerset | 25. Winding River Plantation |
| 7. Hilton Head Plantation | 17. River Landing | |
| 8. Landfall | 18. RiverSea Plantation | |
| 9. Landing at Southport | 19. River's Edge | |
| 10. Magnolia Greens | | |



LELAND & BRUNSWICK COUNTY

If your perfect day includes golf in the morning and an evening walk along the beach, then Brunswick County is your paradise. If you are new to the area or thinking of relocating, we invite you to explore all it has to offer.

ABOUT THE AREA

For generations, beach goers have been visiting this storied stretch of shoreline, creating lifelong memories filled with sun, sand and seafood. Whether it's the area's inviting charm, expansive and pristine beaches, temperate seasons, coastal cuisine or unique attractions, you'll treasure all Brunswick County has to offer.

Leland: Located a short drive from the city of Wilmington and the beaches of

Brunswick County, Leland offers a quiet home base for those looking to relocate and retire. It is the gateway to the beach towns of Brunswick County.

Southport: Southport is located where the Cape Fear River meets the Atlantic Ocean. It's known for its stunning scenery, maritime heritage and sea breezes that are calm and welcoming. The Southport Ferry is also a popular attraction for many!

Brunswick County Beaches:

Bald Head Island – Just a few miles from Southport sits Bald Head Island. It's one of the few islands in the Eastern United States where vehicles are not allowed and golf carts are the primary mode of transportation.

Oak Island and Caswell Beach – Caswell Beach is home to the Oak Island Lighthouse, and offers serene beach and lush marsh views.

Holden Beach – Known as a popular family beach destination, Holden Beach offers small town charm and unspoiled beauty. Chasing ghost crabs with a flashlight or wading in the Lockwood Folly Inlet are popular activities for residents and tourists alike.

Ocean Isle Beach – Ocean Isle Beach offers the perfect combination of low-key relaxation and opportunities for adventure. It's also known as a popular spot for Brunswick Island's surfers.

Sunset Beach – As the southern-most Brunswick Island beach, Sunset Beach has sweeping views of sand and surf. It also features Bird Island and the Kindred Spirit Mailbox, where you can share your thoughts and stories with others in the pages of a notebook tucked within.



THINGS TO SEE AND DO

These are our top 10 picks for things to see and do in Brunswick County.

The Clubs at St. James

*3779 Members Club Blvd., Southport, NC
910.477.8500 theclubsatstjames.com*

Proudly offering four unique golf courses with an assortment of challenges. From the highest slope ratings of any course in the region to multilevel bent grass greens and split fairways, these courses are perfect for those who like a high risk-reward style of golf.

Compass Pointe Golf

*2431 The Pointe Club Drive, Leland, NC
910.777.7766 compasspointegolfclub.com*

The course features wide and fast fairways, large Champion Bermuda greens and native Carolina landscapes that create an exceptional golf experience.



Silver Coast Winery & Tasting Room

*Ocean Isle Beach & Southport, NC
910.287.2800 silvercoastwinery.com*

Enjoy wines from the Carolinas. Silver Coast has a tasting room in Southport and a winery on the mainland of Ocean Isle.

Rivers Edge Golf Club

*2000 Arnold Palmer Drive Shallotte, NC
910.755.3434 playriversedgegolf.com*

Sitting along the Shallotte River, this Arnold Palmer Signature Design course is by far one of the most scenic courses in the Eastern United States.

Old Baldy Lighthouse

*101 Light House Wynd, Bald Head Island, NC
910.457.7481 oldbaldy.org*

Gain unique perspective as you tour North Carolina's oldest standing lighthouse.



Odell Williamson Auditorium

*150 College Road NE, Bolivia, NC
910.755.7416 bccowa.com*

Enjoy a show from the performing art series, which offers educational and cultural enrichment for the community.

OIB Helicopter Tours

*6070 Beach Drive, Shallotte, NC
910.575.7575*

Scenic helicopter tours, covering all for the Brunswick County islands and the surrounding area.

**Calabash Fishing Charters
from Hurricane Fleet**

*9975 Nance Street, Calabash, NC
843.249.35711 hurricanefleet.com*

From deep sea fishing to dolphin tours, experience the Brunswick County islands from the water.

Callahan's of Calabash

*9973 Beach Drive, Calabash, NC
910.579.2611 callahansgifts.com*

Shop a vast selection of home and holiday decor, apparel and gifts in a sprawling 35,000-square-foot specialty retail space.

EAT WELL

These are our top 10 picks for restaurants and dining experiences in Brunswick County.

Bella Cucina

5177 Southport-Supply Road SE, Unit A, Southport, NC

910.454.4540 belladiningnc.com

Fine Italian dining and pizzeria, featuring recipes handed down through the DeMeo family. Menu features farm fresh produce and locally caught seafood.

Boundary House

1045 River Road, Calabash, NC

910.579.8888 boundaryhouserestaurant.com

Offering a variety of dishes prepared in-house using only the finest ingredients. Boundary House serves only USDA Choice beef and the freshest seafood available.

Captn. Nance’s Seafood Restaurant

9939 Nance Street, Calabash, NC

910.579.2574 captainnancesseafood.com

Family owned and operated since 1975, and located beside the beautiful Calabash River. Captn. Nance’s serves traditional Calabash-style seafood.

Fishy Fishy Cafe

106 Yacht Basin Drive, Southport, NC

910.457.1881 fishyfishycafe.com

Casual, waterfront dining with indoor and outdoor seating. Fishy Fishy serves fresh seafood, fried seafood, Angus burgers and salads.



Latitudes

2431 The Pointe Club Drive, Leland, NC

910.777.7766 latitudes-restaurant.com

This is a favorite spot among Compass Pointe residents, as it’s known for its laid-back atmosphere and as a gathering place. Serving breakfast, lunch and dinner and Trivia Tuesdays twice a month.

Oliver’s on the Cape Fear

101 West Bay Street, Southport, NC

910.477.9299 oliversonthecapefear.menu

Indoor and outdoor waterfront dining on



AREA GUIDE – LELAND & BRUNSWICK COUNTY

the Cape Fear River. Oliver's on the Cape Fear features Southern cuisine as well as gluten-free and vegan options.

Pizzetta's

*1144 East Cutlar Crossing, Suite 105,
Leland, NC*

910.371.6001 pizzettaspizzanc.com

Whether you are looking for an authentic Italian pasta dish or a hand-tossed pizza fresh from the oven, Pizzetta's is the place to be!

Provision Company

1343 Cedar Landing Road, Supply, NC

910.842.7205 procob.com

A throwback to a simpler time! The Provision Company is a no-frills eatery serving fresh seafood, sandwiches and beautiful views of the Intracoastal Waterway near Holden Beach.

Purple Onion Cafe

4647 Main Street, Shallotte, NC

910.755.6071 purpleonioncafe.com

A community favorite for breakfast and lunch. Its menu includes traditional breakfast items as well as burgers, sandwiches, soups, salads and desserts.

Sharkey's Waterfront Restaurant

61 Causeway Drive, Ocean Isle Beach, NC

910.579.9177 sharkysoceanisle.com

A family-friendly seafood spot, also serving pizzas and pastas, with a large deck that overlooks the inlet.

Southport Gourmet & Sushi Bar

1643 North Howe Street, Southport, NC

910.477.9045 southportgourmetandsushibar.com

Enjoy Japanese-style dishes alongside creative sushi rolls and sashimi in a laid-back atmosphere.

Southport Smokehouse

1102 North Howe Street, Southport, NC

910.363.5035 southportsmokehouse.com

From a low-key counter, Southport Smokehouse dishes up classic barbecue plates and sandwiches in an airy setting.



If you'd like to learn more about designing and building a custom home in Leland or Brunswick County, contact us today to discover the possibilities!

910.256.8284 | hagoodhomes.com

WILMINGTON & NEW HANOVER COUNTY



From a historic riverfront along the Cape Fear to island beaches, Wilmington and the greater New Hanover County area enthrall visitors and residents alike. If you are new to the area or thinking of relocating, we invite you to explore all this area has to offer.

ABOUT THE AREA

Perhaps the biggest draw for new residents to the Wilmington and New Hanover County area is our beautiful beaches. But Wilmington's vibrant downtown and midtown areas are equally popular for their big-city amenities with small town charm.

Wrightsville Beach: With crystal-clear water and white sandy beaches, Wrightsville Beach is truly one of the area's cherished places. As you drive across the

drawbridge onto the island, your troubles melt away with your first glimpse of water, sun and sand that seem to stretch for miles and miles. It's a common sight to see yachts docked or boats pulling up to waterfront restaurants along this stretch of the Intracoastal Waterway. Surf shops and local watering holes line the streets of Wrightsville Beach, along with Roberts Grocery ... you must try its famous chicken salad!



AREA GUIDE – WILMINGTON & NEW HANOVER COUNTY

Carolina Beach: For a fun-filled experience with fair rides, fireworks and a beach boardwalk, spend the day at Carolina Beach, also known as Pleasure Island. Live music events and festivals occur throughout the year. It's also the only beach in the area where you can go off-roading along the beach front. For those looking to connect with nature, the island has miles of sandy trails and popular campgrounds, including Freeman Park (located on the shore of the Atlantic Ocean) and Carolina Beach State Park (located on the Cape Fear River).

Kure Beach & Fort Fisher: Just south of Carolina Beach, on the same island, you will find Kure Beach and Fort Fisher. Kure beach is a quiet, family-friendly place with expansive views of the Cape Fear River estuary and the Atlantic Ocean. Fort Fisher was built to protect the port of Wilmington during the Civil War era and offers daily tours for history buffs.

Midtown: Seahawk pride is evident in midtown Wilmington, as the area is bustling with students who attend the University of North Carolina at Wilmington. In addition to UNCW, many national brand retailers and medical facilities are found in midtown, including Cape Fear Hospital and New Hanover Regional Medical Center.

Historic Riverfront: Cobblestone streets, horse-drawn carriage tours and of course the USS North Carolina battleship can all be found in Wilmington's historic riverfront district.



While much work has gone into restoring the infrastructure downtown, the areas is rich in charm and things to see and do.

THINGS TO SEE AND DO

These are our top 10 picks for things to see and do in New Hanover County.

Lumina Station

*1900 Eastwood Road, Wilmington, NC
910.256.0900 luminastation.com*

Located just before Wrightsville Beach, Lumina Station includes unique restaurants and retail shops for discerning tastes. It's also a personal favorite as our corporate office can be found here.

Mayfaire Town Center

*6835 Conservation Way, Wilmington, NC
910.256.5131 mayfairetown.com*

Mayfaire Town Center is an outdoor mixed-use town center with a variety of restaurants, retail shops, apparel, grocery stores and specialty stores. It's also home to a state-of-the-art cinema.

Chandler's Wharf

*225 South Water Street, Wilmington, NC
910.343.9896*

Found on the southern end of downtown Wilmington, Chandler's Wharf is a collection of local boutiques and art galleries.

Cotton Exchange

*321 N. Front Street, Wilmington, NC
910.343.9896 shopcottonexchange.com*

Over 30 unique local shops and restaurants tucked away in the heart of historic downtown Wilmington. It offers the highest concentration of boutique shops in one place.

Airlie Gardens

*300 Airlie Road, Wilmington, NC
910.798.7700 airliegardens.org*

Airlie Gardens is a premier garden of the coastal South that features 67 acres of walking paths, formal gardens, seasonal blooms, live oaks, historic structures and contemporary sculpture. There are also concerts, festivals and events that occur there regularly.

Thalian Hall

*310 Chestnut Street, Wilmington, NC
910.632.2285 thalianhall.org*

Catch a show at one of the oldest theaters in the United States. Events range from ballet and theater, to pop, jazz, rock and country music concerts, to the finest in domestic, independent and foreign films.

Battleship North Carolina

*1 Battleship Road, Wilmington, NC
910.251.5797 battleshipnc.com*

Walk the deck and discover one of America's most historic wartime treasures.

Wrightsville Beach Scenic Tours

*275 Waynick Boulevard,
Wrightsville Beach, NC 910.200.4002
wrightsvillebeachscenictours.com*

Explore the area from the water! Wrightsville Beach Scenic Tours offers tours and excursions, including a water taxi to Masonboro Island.





AREA GUIDE – WILMINGTON & NEW HANOVER COUNTY

Wilson Center

703 North Third Street NC

910.362.7999 cfcc.edu/capefearstage

Enjoy Broadway touring productions, concerts, symphonic performances, recitals, symposiums and more!

Port City Brew Bus

108 Grace Street, Wilmington, NC

910.679.6586 portcitybrewbus.com

The ultimate craft beer experience. The Port City Brew Bus comfortably transports riders to various venues for tours, tastings and entertainment.

EAT WELL

These are our top 10 picks for restaurants and dining experiences in New Hanover County.

The Basics

319 North Front Street, Wilmington, NC

910.343.1050

thebasicswilmington.com/restaurant

The basics of good Southern food – comfort, fresh regional ingredients and long-standing favorites.

Bill’s Front Porch & Capt’n Bill’s

4238 Market Street, Wilmington, NC

910.762.0173 seeyouatbills.com

A unique complex that includes an on-site brewery, sports bar and outdoor volleyball facility.



Circa 1922

8 North Front Street, Wilmington, NC

910.762.1922 circa1922.com

Enjoy tapas, sushi, cheese and charcuterie as well as delicious dishes from the sea and land.

Copper Penny

109 Chestnut Street, Wilmington, NC

910.762.1373 copperpennync.com

Enjoy its eclectic menu of sandwiches, burgers and appetizers along with an extensive selection of mixed drinks and beer.

Elijah’s

2 Ann Street Wilmington, NC

910.343.1448 elijahs.com

A casual American grille and oyster bar set along the banks of the Cape Fear River.

Indochine

17 Wayne Drive Wilmington, NC

910.251.9229 indochinewilmington.com

Try a taste of the Far East with Thai and Vietnamese fare served in an art-filled setting with an outdoor garden, Koi pond and gazebo.

Oceanic

703 South Lumina Avenue, Wrightsville Beach, NC

910.256.5551 oceanicrestaurant.com

Enjoy panoramic views of the Atlantic Ocean at the Crystal Pier, while dining on coastal-inspired signature dishes.

Portland Grille

1908 Eastwood Road Suite 111, Wilmington, NC

910.256.6056 portlandgrille.com

Progressive American cuisine, with free-range meats and ingredients sourced from sustainable farms.

Sweet N Savory Cafe

1611 Pavilion Place, Wilmington, NC

910.256.0115 sweetnsavory.cafe

Enjoy locally inspired cuisine. Sweet N Savory serves breakfast, brunch, lunch and dinner. You don't want to miss a sweet treat from the full-service bakery.



If you'd like to learn more about designing and building a custom home in Wilmington or New Hanover County, contact us today to discover the possibilities!

910.256.8284 | hagoodhomes.com



ABOUT



Steeped in a lineage of craftsmanship, design, and custom construction, homebuilding is who we are. The first Hagood home was built in 1842 in South Carolina's low country. It's distinctive flare and artistry has withstood the test of time, and it remains a centerpiece in low country historical architecture today.

*This is the foundation we continue to build on,
one of quality construction and superior design.*

We're driven to; it's in our blood.

We are known for being easy to work with and have a reputation of quality built homes. Such a track record has helped Hagood earn a number of prestigious awards, including the Parade of Homes Gold Award multiple years. With over 25 years of building expertise and crafting over 1,500 homes in the coastal Carolinas, Hagood Homes has built a reputation as solid as our footings.

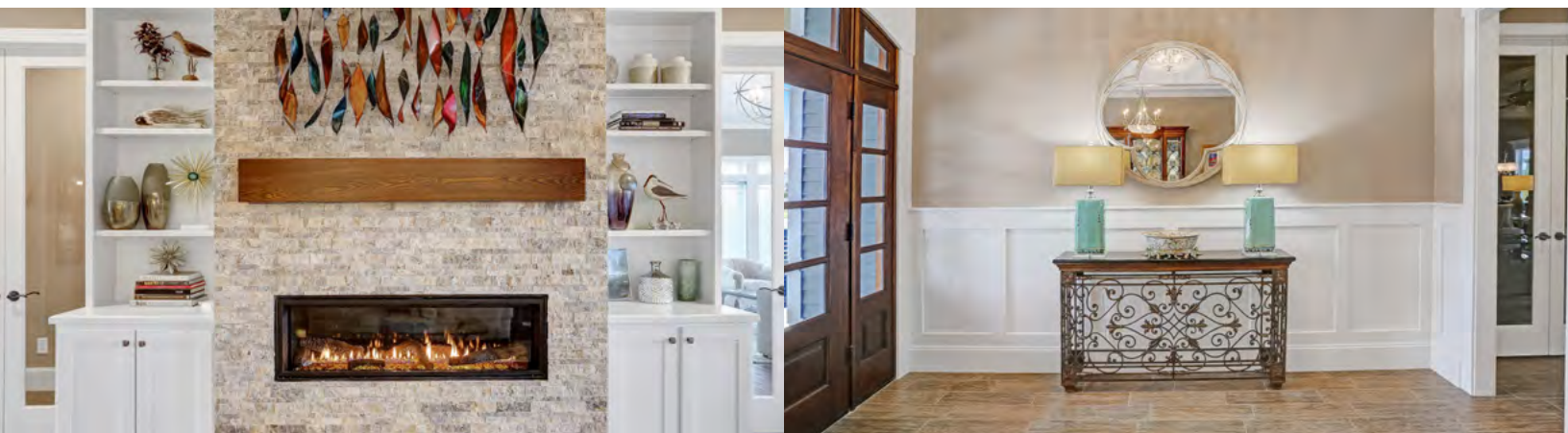
CHARACTER

Hagood's homes have a distinctive character that you don't find with other builders. Each time you walk into a Hagood home, you unmistakably know it is a Hagood home, yet each one is different. Some of our design examples that give Hagood homes their character are:

- Signature drop zone
- Double stud pocket windows
- Heavy millwork
- Pediment details over main windows
- Wainscoting or shiplap in two rooms
- 10-foot ceilings for an open, airy feel
- 8-foot doors throughout first floor (*included in Compass Pointe, St. James Plantation, RiverSea Plantation and the Estate Collection*)



Features vary per collection





THE HAGOOD ADVANTAGE

For us, creating house plans is not just a job. It is a job we are passionate about. We love what we do! Each Hagood home has a flow and immediate livability that is second to none.

- Our home plans incorporate abundant natural light that is filtered through windows, doors and open spaces.
- Our home plans include interior design and furniture placement to show function and flow.
- We create home plans that provide greater livability, utility and function with less wasted space.
- Our home plans incorporate innovative features such as furniture-style cabinets, large work and leisure islands, bunk rooms, guest suites with private lounge areas, barn-rail doors and other design features that are both functional and timeless.
- Flex areas are an important lifestyle choice, and our home plans typically include space that can be adapted for media rooms, craft areas, play spaces or home offices.
- Well-planned outdoor living rooms for entertaining and enjoying the coastal Carolinas' natural beauty are integral to our home designs.
- The goal for each plan we create is to reflect the coastal Carolinas' history and architecture. Our home designs all have strong curb appeal.



DESIGN PERSONALIZATION

Our custom home design service helps dreamers turn their concepts into homes that are uniquely theirs. From winding staircases to handcrafted built-ins to custom pools and patios, Hagood Homes' design services bring unique features to life to create timeless and one-of-a-kind homes for our clients. Our design team brings inspiration and experience and then manages the details to ensure your project stays on point.

Known as the builder that can “make it happen,” we personalize our homes to fit the needs of our clients. We also offer the following design consultations to customize features that fit your style:

- Design consultation with kitchen designer
- Design consultation with landscape designer
- Outdoor living space design consultation
- Closet design consultation for owners' retreat
- Electrical plan review with electrician
- Low voltage/smart home consultation
- Lighting consultation



HISTORY OF EXCELLENCE



With more than 25 years of building expertise and after crafting more than 1,500 homes in the coastal Carolinas, Hagood Homes has built a reputation as solid as our footings.

We are known for being easy to work with and have a reputation of quality-built homes. Such a track record has helped Hagood Homes earn a number of prestigious awards, including the Parade of Homes Gold Award for several years.

Our founders Jim and Troy Kenny received the distinguished honor of being inducted into the Wilmington Cape Fear Home Builders Association's Hall of Fame in 2019.

PLAN REVIEW & SELECTIONS EXPERIENCE

After working alongside one of our sales advisors to decide on a plan and a home site, the next step is to book a Hagood Homes plan review and selections experience.

Plan review and selections are an extremely important part of our process and are designed to give each client one-on-one time with our team and vendors to ensure prior to construction each home will be designed and look exactly the way you want it!

Each appointment consists of an electrical plan review and a pre-construction review. In addition to the review meetings, each client has dedicated time with our selections experts to choose exterior and interior paint, plumbing and flooring for their new home.

Learn more about our review and selections experience [here](#).





PROCESS: FROM CURIOSITY TO COMPLETION



WEEK 1

- Tour our homes with a sales person
- Select a plan from our portfolio
- Plan overlay on home site
- Define changes to plan
- Discuss construction financing options



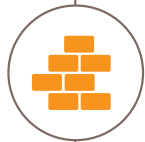
WEEK 2

- Finalize home design and make any refinements needed
- Review proposal and included features
- Contract signing with deposit



WEEK 8-16

- Plan review (*construction, materials, building survey, Builder Trend*)
- Selections (*exterior finishes and colors, cabinets, counter tops, flooring, fixtures, electrical, low voltage, closet organizer, landscape architect – typically 3 days*)
- Submit for architectural review
- Permit applications
- Regulatory approvals



WEEK 17-19

- Home site clearing
- Footers & foundation



WEEK 20-25

- Framing, roof, dry in
- Mechanicals (*HVAC, Electrical & Plumbing*)
- Client walk through



WEEK 26-33

- Spray foam
- Drywall installation
- Cabinet, tile, finish carpentry



WEEK 34-48

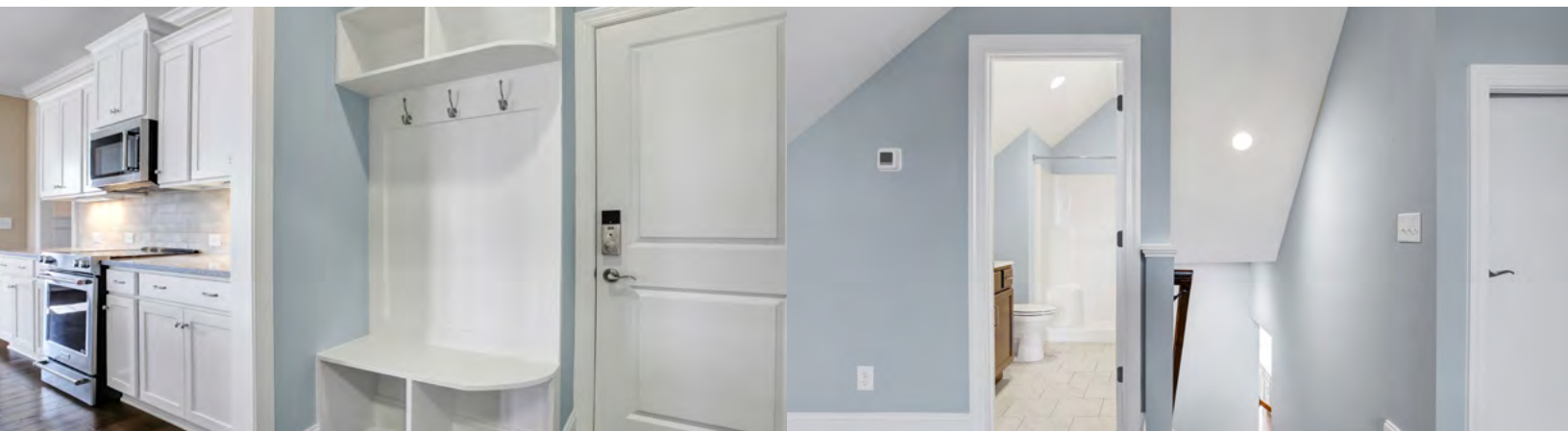
- Paint
- Flooring
- Trim out
- Closet design & installation
- Landscaping & irrigation
- Clean
- New owner orientation
- Completion close

EFFICIENT & EFFECTIVE USE OF SPACE

In addition to an effortless flow, each Hagood home maximizes space with efficient and effective use of square footage. There is no wasted space in our homes. We ensure that every square foot is designed brighter, smarter and more usable.

Here are just a few of the ways that we are maximizing space in our homes:

- Open floorplan of common areas, including kitchen living and dining areas
- Unnecessary walls and halls are eliminated to maximize space
- Strategically located and designed drop zone in every home help with organization
- Custom pantry shelving maximizes space for storage
- Custom kitchen cabinetry provides ample space for cookware
- Built-out attics provide maximum use of second-story space and easy access to storage





ACCESSIBLE ATTICS

When you think of an attic, you may be picturing a dark, closed-in area of your house that you rarely visit. But at Hagood Homes, we embrace these hidden gems and have designed them to create greater space and more possibilities for your home.

Extra Space for Storage or Bonus Room Extension

We design the attic space in Hagood homes to be accessible and have walk-in capabilities. This means that you don't have to mess around with pull-down stairs or a clunky ladder. With our accessible attics, you can walk right in, which makes organization and mobility much easier. With the secure floors in our attics, you won't need to tiptoe around in fear that one wrong move will send you crashing through the ceiling of the room below.



Our attics are designed so that you could even finish them with drywall and the flooring of your choice to create additional livable square footage.

Improved Insulation

Hagood Homes recently began using Foamsulate™, a spray foam insulation, in many of our homes. Foamsulate™ is an alternative to traditional insulation and an effective choice for attics and crawl spaces. It creates a thermal envelope that reduces pockets of hot or cold air in attics and throughout homes. When this newer form of insulation is used, homeowners can benefit from an average reduction in energy costs of 40 percent. In addition to less energy use, many homeowners enjoy improved comfort and function in the attic, which is no longer unbearably cold or hot. Foamsulate™ also reduces outdoor allergens, pollutants and pests.

The attic temperature remains within a few degrees of the temperature of the rest of your house. Homeowners never have to worry about an unbearably hot or cold attic again!

AGING-IN-PLACE

We want homeowners to build their own legacy in a Hagood home. With each custom home design, we envision a space that you can and will want to live in for many years. Our homes offer features that make aging in place possible. Some examples of our aging-in-place design features include:

- Spacious, open floor plans for optimal mobility
- Master-on-main plan options
- Oversized suites and master baths
- Zero-step entry into shower
- Footings 50% (12-inches) wider than N.C. building code (8-inches) to reduce maintenance issues and improve overall structural soundness
- Energy efficient features that result in reduced monthly expenses to ensure maximal savings year after year
- Walk-in attic storage for easy access
- Wide interior doors in main living area
- 6-foot windows for natural lighting to reduce eye strain
- Solid maple quality cabinets with full extension dovetail drawers, soft-close drawers and soft-close doors for easy use
- Motion-activated lights in pantry
- 8-foot-deep porch; other builders commonly feature 6-foot deep porches or smaller
- Screened-in and covered rear patio and outdoor living areas





NATURAL LIGHT

Natural lighting helps people be more productive, happy, healthy and calm. It boosts the immune system and reduces blood pressure.

Plus, compared to other lighting methods, natural lighting reduced eye strain and makes it easier to see.

While other builders use 4 1/2 foot- to 5-foot windows, Hagood homes feature 6-foot windows for ample natural light. Our homes have an average of 30% more windows than other builders.



ENERGY CONSCIOUS

Hagood homes are designed to measurably improve energy efficiency. Our homes' National Energy Rating (HERS INDEX) is on average 45% better than the average new home built in the United States. Plus, many of our homes are ecoSelect Certified. Through this program prospective buyers receive a copy of the home's energy report to verify its energy efficiency.

Some examples of our energy-conscious features include:

- Programmable thermostats
- Insulated, raised brick foundation
- High-efficiency HVAC
- Energy-efficient lighting with all LED bulbs
- Reduced water usage
- Advanced air sealing (dramatically diminishes airflow, as well as dust and pollen, from the outside entering into your home)
- Full encapsulation of home using open cell spray foam
- All homes built to HERO code guidelines, a 72-item checklist that is regulated by an independent third party, consisting of 3 certification inspections
- Triple-pane windows
- Advanced framing techniques, including but not limited to California corners, ladder "T"s, and insulated headers over all doors and windows

In 2017 we began using MPI spray foam insulation. The U.S. Department of Energy estimates this type of insulation offers up to 40% savings on heating and cooling costs. With an average HERS index score of 60, this non-toxic insulation lessens your carbon footprint by reducing your homes energy consumption.





OVERSIZED GARAGES

The oversized garages featured in our homes provides ample space for cars, golf carts and other toys. There is plenty of room to walk in front of and behind parked cars. If desired, our oversized garages provide the option for custom cabinets or work benches for hobbies and crafts.

Our standard 10-foot ceilings make it possible to feature a larger garage door for enhanced curb appeal. Our 8-foot tall garage doors are a whole foot higher than the industry standard.

Our garage doors are also wider than those installed by other builders. While the industry standard is 7-feet wide for a single garage and 16-feet wide for a double, Hagood homes feature 8-feet and 18-feet wide garages.



INCLUDED EXTRAS

While other builders may consider them upgrades, Hagood Homes has many extras that come standard. Examples of included extras are:

CHARACTER

- Cove crown molding
- Coastal 4-1/4-inch trim around all windows and doors
- James Hardie siding
- 10-foot ceilings on first floor
- 7-inch baseboards throughout
- 8-foot front door
- 8-foot doors on entire first floor
- Architectural shingles with 30-year warranty
- Shiplap OR wainscoting in foyer, dining area and on back of island
- Custom pediment details over main windows and doors
- Zero-entry tiled shower in master bath with frameless shower doors

ENERGY CONSCIOUS

- Full house energy wrap
- Triple pane, Low E and Argon gas filled 6-foot windows
- Insulated slab foundation



- Energy-efficient lighting
- Spray foam insulation in attic and walls
- High Efficiency Residential Option (HERO) Certified Home
- Trane XR 15 SEER heat pump with fresh air intake

EFFICIENT AND EFFECTIVE USE OF SPACE

- Signature custom drop zone
- Built-in cabinets in family room
- Award winning designs

ACCESSIBLE ATTICS

- Walk-in attic access with full size door area for storage
- Engineered truss system for the most storage space possible



- Spray foam insulation that keeps attic only a few degrees different in temperature from conditioned space

OVERSIZED GARAGES

- 8-foot tall and 18-foot wide garage doors with keypad access and Bluetooth
- Garages, trimmed, painted with epoxy painted floor
- Ample space for cars and other toys
- Plenty of room to walk in front of and behind parked cars

AMPLE OUTDOOR LIVING

- Generous sized screened back porch
- 12-foot diameter patio off screened porch
- Rocking chair sized, 8-foot deep front porch
- Crushed shell finish on front and rear porches

INCLUDED EXTRAS

- Decora paddle switches
- Solid doors to bedrooms
- LED under counter lights
- Solid wood shelves with motion lighting in the pantry

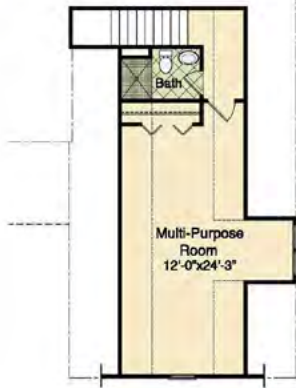
- Bonus room with full bath
- Lighted LED mirrors in the master bath room
- Wood ventilated shelves in master bedroom
- 8-inch spread in Master bath room
- Landscape architect custom plan with irrigation and rain sensor
- 3 course, insulated, raised brick foundation on all sides
- 5-inch wide hard wood flooring all common areas
- 3 colors (walls) ceiling, trim and doors not included
- 2 floor outlets in great room
- Soft-close, dovetail, full-extension cabinet doors and drawers in all rooms
- Full overlay cabinets in kitchen
- 16 paint colors and 11 stain options for cabinets
- 42-inch wide fireplace
- Gutters with downspouts
- ecoSelect – third-party home inspection (HERS energy certificate) company that verifies yearly savings



THE APPOMATTOX
front or side load
4 Bedrooms/Study
3 1/2 Baths
3261 Square Feet



THE APPOMATTOX



First Floor Heated Square Footage: 2799
Bonus Room Heated Square Footage: 462
Total Heated Square Footage: 3261

Width 63' 3" • Depth 94' 6"

© copyright Hagood Homes



BAJA COVE

4 Bedrooms
3 Baths
2062 Square Feet

VIEW PHOTOS AND VIDEO OF THIS PLAN

Catherine's Cove



BAJA COVE - *Catherine's Cove*

First Floor Heated Square Footage: 1353
Upper Floor Heated Square Footage: + 709
Total Heated Square Footage: 2062
Width 49' 0" • Depth 44' 4"

© copyright Hagood Homes

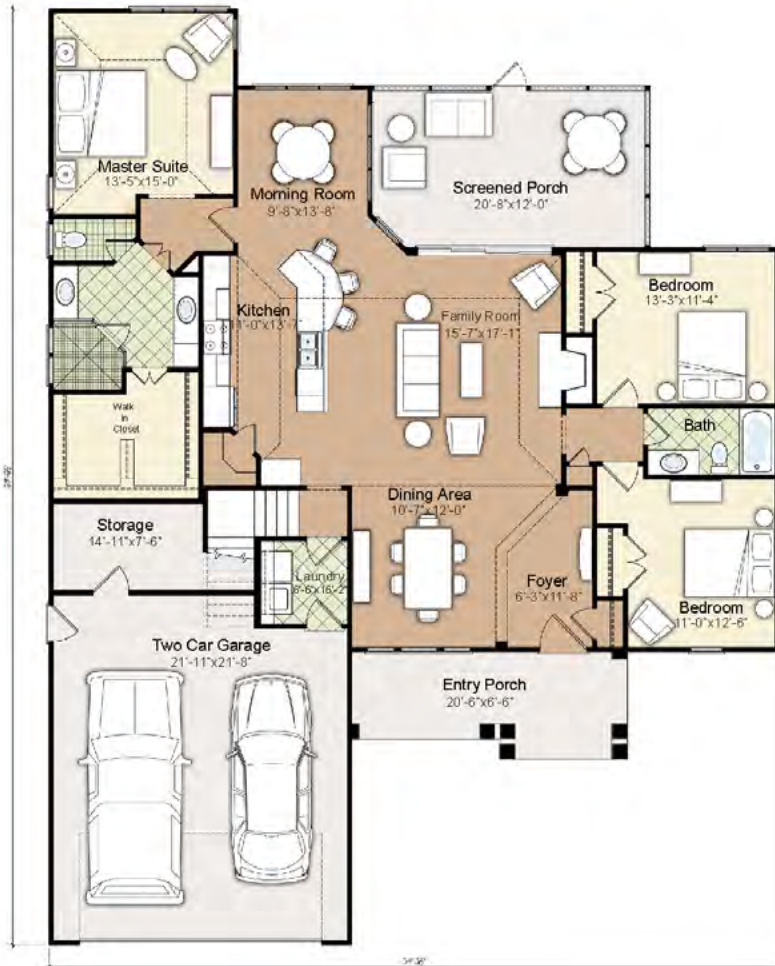


VIEW PHOTOS AND VIDEO OF THIS PLAN



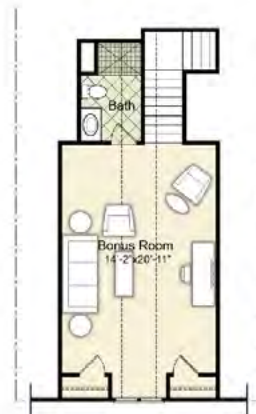
THE BEAUFORT
front load
3 Bedrooms
2 Baths
2196 Square Feet

THE BEAUFORT - Front Load



First Floor Heated Square Footage: 1847
Bonus Room Heated Square Footage: +349
Total Heated Square Footage: 2196
Width 54'3 1/2" • Depth 69'6 1/2"

© copyright Hagood Homes





VIEW PHOTOS AND VIDEO OF THIS PLAN

THE CALIBOGUE
courtyard
 4 Bedrooms
 3 1/2 Baths
 2513 Square Feet



THE CALIBOGUE

First Floor Heated Square Footage: 1998
 Bonus Room Heated Square Footage: + 515
 Total Heated Square Footage: 2513
 Width 58'2" • Depth 88'0"

© copyright Hagood Homes



VIEW PHOTOS AND VIDEO OF THIS PLAN

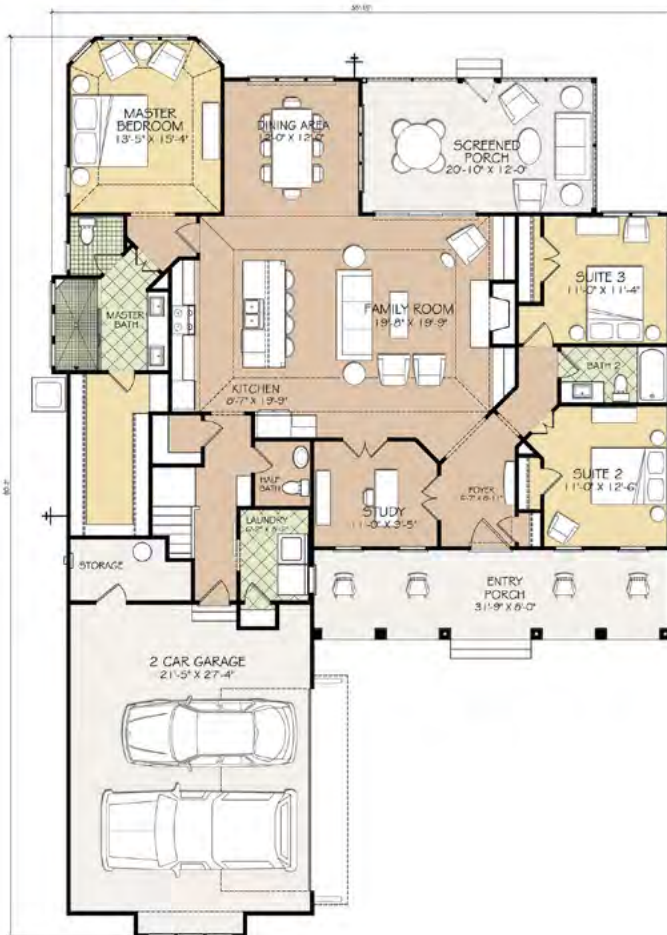


CAPE LOOKOUT

4 Bedrooms
3 1/2 Baths
2485 Square Feet



CAPE LOOKOUT



First Floor Heated Square Footage: 2041

Second Floor Bonus: + 444

Total Heated Square Footage: 2485

Width 55'1/2" + Depth 80'2"

© copyright Hagood Homes





VIEW PHOTOS AND VIDEO OF THIS PLAN



DAWS CREEK

3 or 4 Bedrooms
3 1/2 Baths
2304 Square Feet



DAWS CREEK



First Floor Heated Square Footage: 1931
Second Floor Heated Square Footage: + 373
Total Heated Square Footage: 2304
Width 50'0" • Depth 77'0"

© copyright Hagood Homes

VIEW PHOTOS AND VIDEO OF THIS PLAN

FORT FISHER COVE I

4 Bedrooms
3 Baths
2222 Square Feet

Catherine's Cove



FORT FISHER COVE 1 - *Catherine's Cove*



First Floor Heated Square Footage: 1898
Second Floor Heated Square Footage: + 324
Total Heated Square Footage: 2222
Width 47'0" • Depth 67'0"

© copyright Hagood Homes

Upper Floor plan



VIEW PHOTOS AND VIDEO OF THIS PLAN

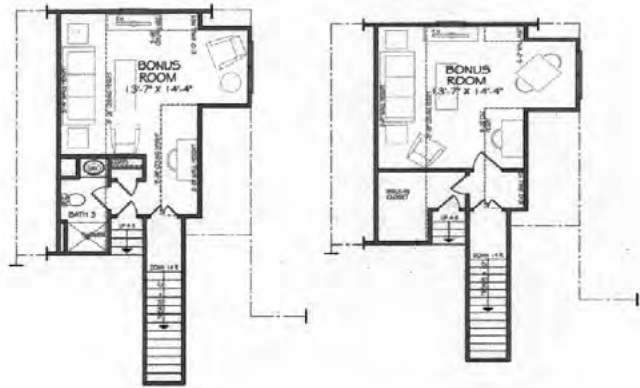
GREENFIELD CREEK
 3 Bedrooms
 2.5 Baths
 2256 Square Feet



GREENFIELD CREEK

First Floor Heated Square Footage:
 Bonus Room Heated Square Footage:
 Total Heated Square Footage: 2256
 Width 35' 2" • Depth 87' 7"

© copyright Hagood Homes





HARBOUR SIDE

3 Bedrooms
3 1/2 Baths
2546 Square Feet

VIEW PHOTOS AND VIDEO OF THIS PLAN



HARBOUR SIDE



First Floor Heated Square Footage: 2210
Second Floor Heated Square Footage: + 336
Total Heated Square Footage: 2546
Width 61'4" • Depth 90'4"

© copyright Hagood Homes



VIEW PHOTOS AND VIDEO OF THIS PLAN

**HARBOUR SIDE
CANTED**

3 Bedrooms
3.5 Baths
2572 Square Feet



HARBOUR SIDE CANTED



First Floor: 2210 SQ FT
 Second Floor: 362 SQ FT
 Total Heated Square Footage: 2572
 Width 70' 1/8" • Depth 91' 11 13/16"

© copyright Hagood Homes



HARBOUR TOWN II

3 Bedrooms
3 1/2 Baths
2711 Square Feet



HARBOUR TOWN II



First Floor Heated Square Footage: 2060
Second Floor Heated Square Footage: + 651
Total Heated Square Footage: 2711
Width 61'4" • Depth 81'4"



VIEW PHOTOS AND VIDEO OF THIS PLAN



HARBOUR TOWN III

4 Bedrooms
3 1/2 Baths
2,814 Square Feet



HARBOUR TOWN III



First Floor Heated Square Footage: 2163
Second Floor Heated Square Footage: 651
Total Heated Square Footage: 2814
Width 61'4" • Depth 86'4"

© copyright Hagood Homes

VIEW PHOTOS AND VIDEO OF THIS PLAN



HERON COVE I

4 Bedrooms
3.5 Baths
2183 Square Feet

Catherine's Cove



HERON COVE I - *Catherine's Cove*



First Floor Heated Square Footage: 1792
Upper Floor Heated Square Footage: + 391
Total Heated Square Footage: 2183
Width 38'0" • Depth 70'0"

© copyright Hagood Homes

Upper Floor plan



VIEW PHOTOS AND VIDEO OF THIS PLAN

River Sea Plantation
HEWLETT CREEK
 3 Bedrooms
 3.5 Baths
 2202 Square Feet



HEWLETT CREEK



First Floor: 1849 SQ FT
 Second Floor: 353 SQ FT
 Total Heated Square Footage: 2202
 Width 46' 0", Depth 78' 0"

© copyright Hagood Homes



VIEW PHOTOS AND VIDEO OF THIS PLAN



ISLANDER COVE I

4 Bedrooms
3 Baths
2320 Square Feet

Catherine's Cove



ISLANDER COVE I - *Catherine's Cove*



Upper Floor plan



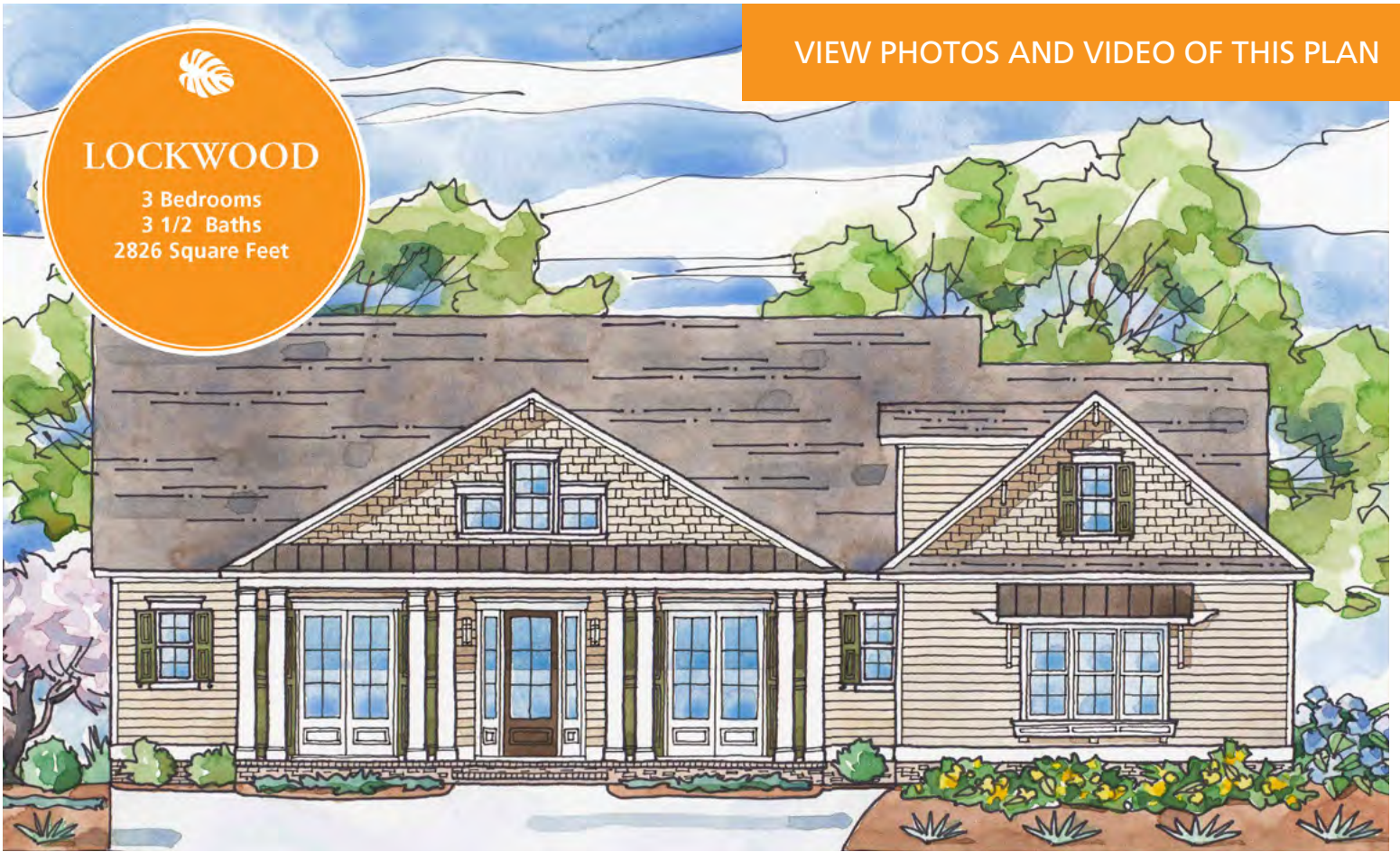
First Floor Heated Square Footage: 1900
Second Floor Heated Square Footage: + 420
Total Heated Square Footage: 2320
Width 44'6" • Depth 64'6"

© copyright Hagood Homes



LOCKWOOD

3 Bedrooms
3 1/2 Baths
2826 Square Feet



LOCKWOOD



First Floor Heated Square Footage: 2483
Second Floor Heated Square Footage: + 343
Total Heated Square Footage: 2826
Width 65'6" • Depth 85'0"



© copyright Hagood Homes



VIEW PHOTOS AND VIDEO OF THIS PLAN

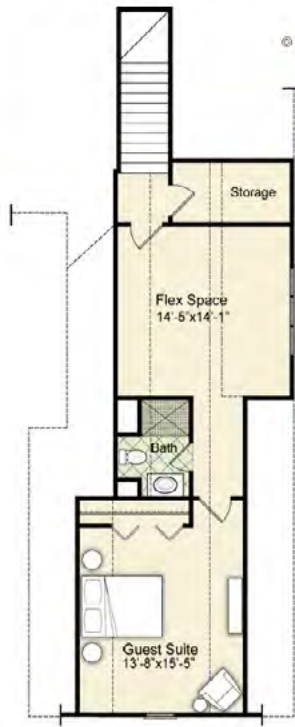

MAYRIVER
 4 Bedrooms
 3 1/2 Baths
 2739 Square Feet



MAY RIVER



First Floor Heated Square Footage: 2095
 Bonus Room Square Footage: + 644
 Total Heated Square Footage: 2739
 Width 62'0" • Depth 89'8"

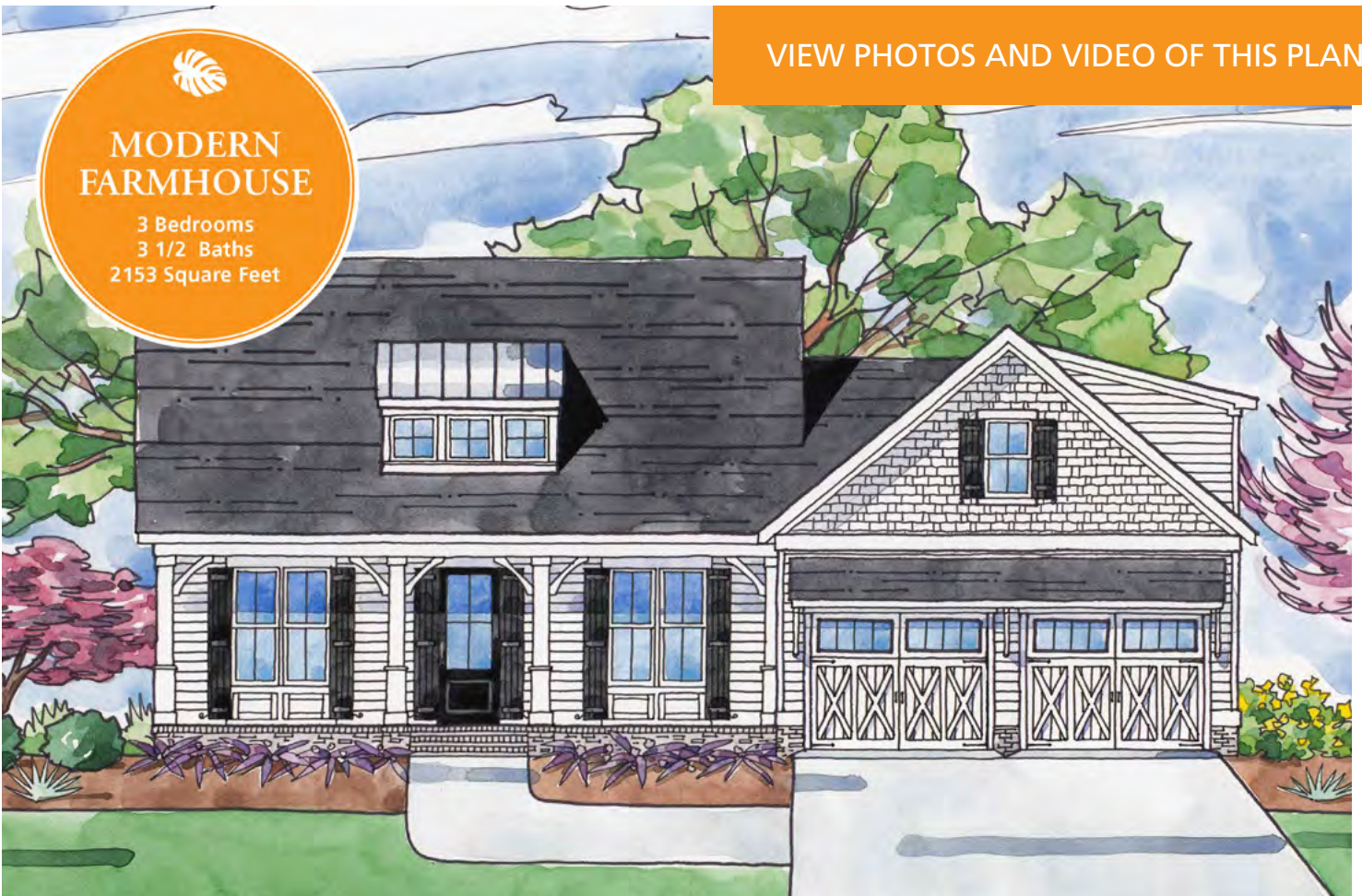


© copyright Hlagood Homes

VIEW PHOTOS AND VIDEO OF THIS PLAN

MODERN FARMHOUSE

3 Bedrooms
3 1/2 Baths
2153 Square Feet



MODERN FARMHOUSE

First Floor Heated Square Footage: 1804
Second Floor Heated Square Footage: + 349
Total Heated Square Footage: 2153
Width 55'2" • Depth 60'8"

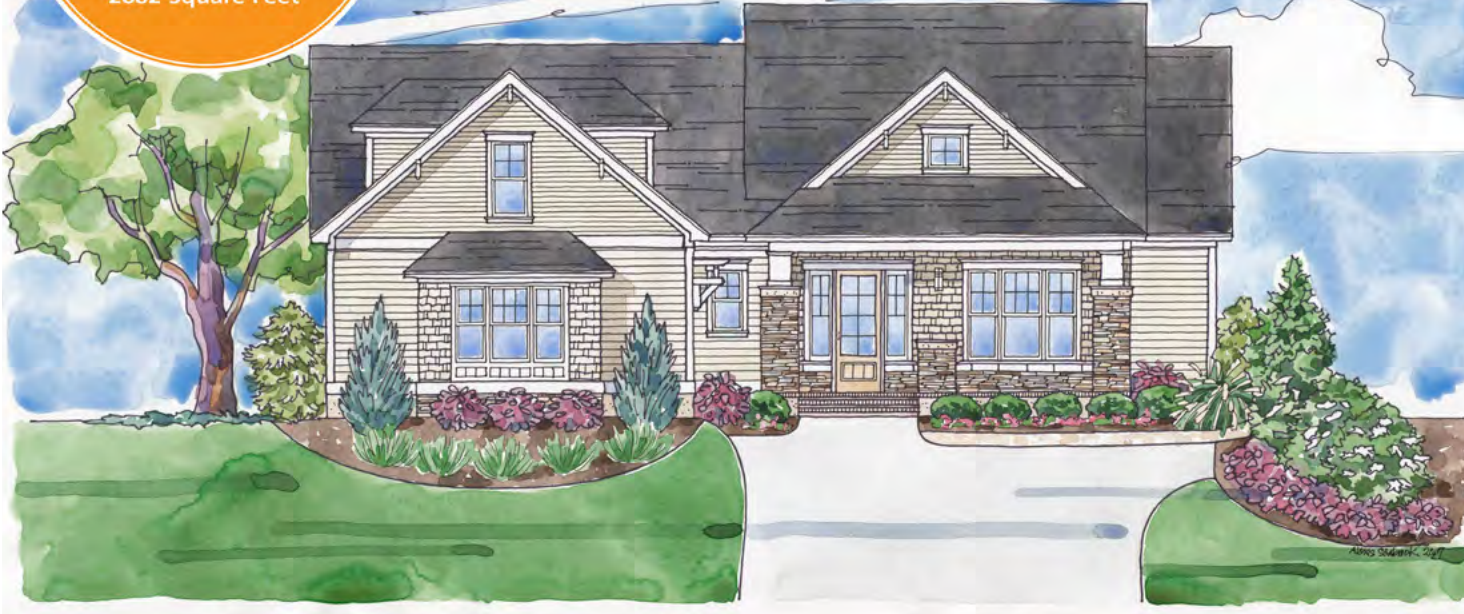
© copyright Hagood Homes



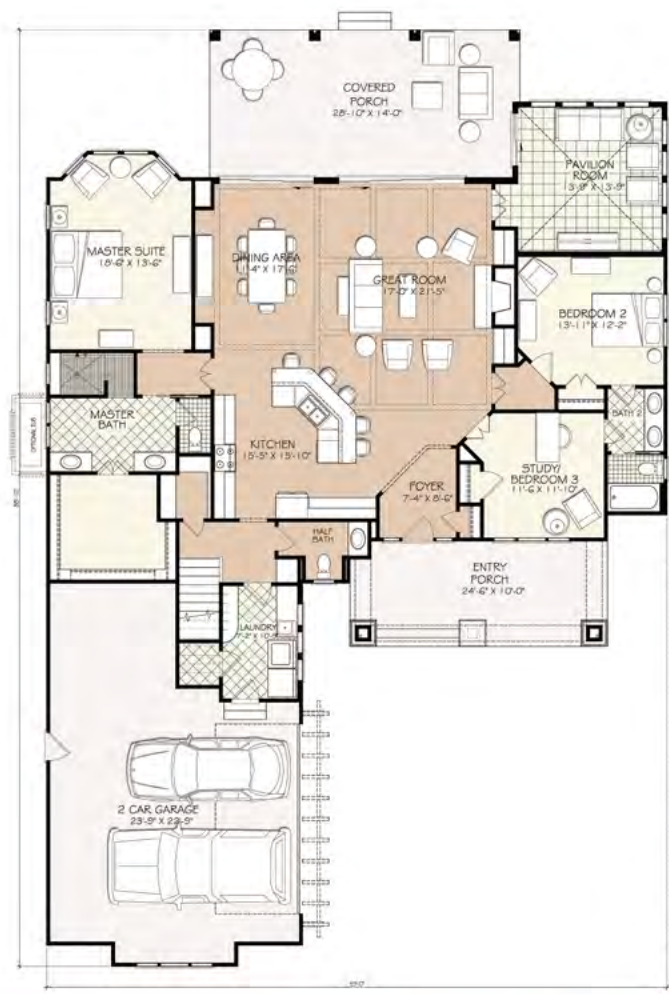


VIEW PHOTOS AND VIDEO OF THIS PLAN

ORTON CREEK
 4 Bedrooms
 3 1/2 Baths
 2882 Square Feet



ORTON CREEK



First Floor Heated Square Footage: 2398
 Second Floor Heated Square Footage: + 4984
 Total Heated Square Footage: 2882
 Width 59'0" • Depth 88'10"



VIEW PHOTOS AND VIDEO OF THIS PLAN


**PALMETTO
COVE**
3 Bedrooms
3 Baths
2457 Square Feet



PALMETTO COVE



First Floor: 2084 SQ FT
Second Floor: 373 SQ FT
Total Heated Square Footage: 2457
Width 61' 2" • Depth 51' 4"

© copyright Hagood Homes



VIEW PHOTOS AND VIDEO OF THIS PLAN



**PAMLICO
SOUND**

3 Bedrooms
3.5 Baths
3040 Square Feet



PAMLICO SOUND



First Floor: 2505 SQ FT
 Second Floor: 482 SQ FT
 Climate Controlled Storage: 56 SQ FT
 Total Heated Square Footage: 3040 SQ FT
 Width 62' • Depth 81'

© copyright Hagood Homes

VIEW PHOTOS AND VIDEO OF THIS PLAN



PEBBLE COVE I

4 Bedrooms
3 Baths
2188 Square Feet

Catherine's Cove



PEBBLE COVE I - *Catherine's Cove*



First Floor Heated Square Footage: 1852
Upper Floor Heated Square Footage: + 336
Total Heated Square Footage: 2188
Width 46'0" • Depth 59'0"

© copyright Hagood Homes



Upper Floor plan



VIEW PHOTOS AND VIDEO OF THIS PLAN

POINTE HARBOR
 4 Bedrooms
 3.5 Baths
 2348 Square Feet

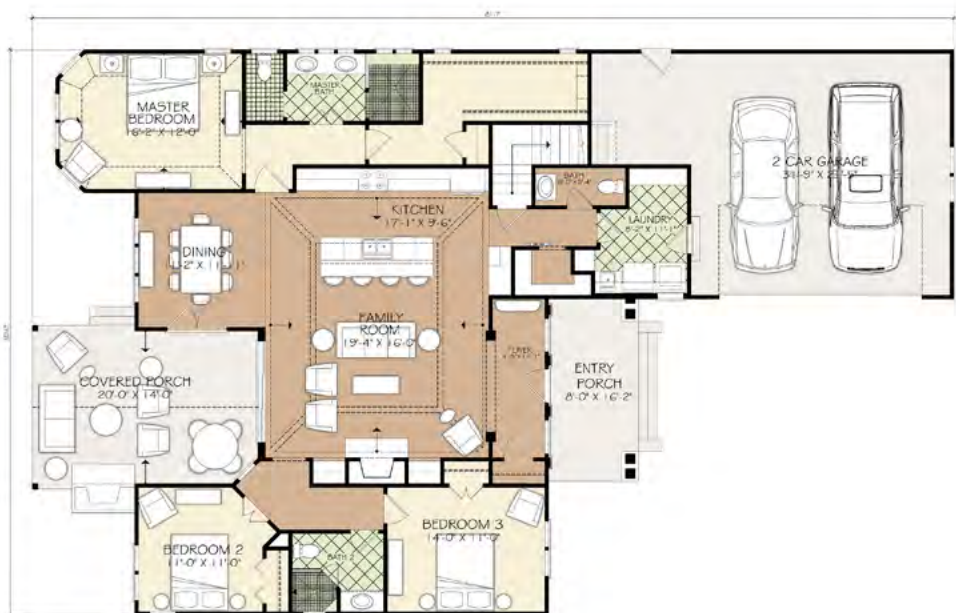


POINTE HARBOR



First Floor Heated Square Footage: 1964
 Second Floor Heated Square Footage: + 384
 Total Heated Square Footage: 2348
 Width 50'0" • Depth 77'0"

© copyright Hagood Homes



VIEW PHOTOS AND VIDEO OF THIS PLAN



POINTE HARBOR
Canted
 4 Bedrooms
 3.5 Baths
 2,379 Square Feet

POINTE HARBOR Canted

Master Bath Options
Tub
or
His/Her Closets

First Floor Heated Square Footage: 1978
Second Floor Heated Square Footage: + 401
Total Heated Square Footage: 2379

Width 66' 10" • Depth 80'

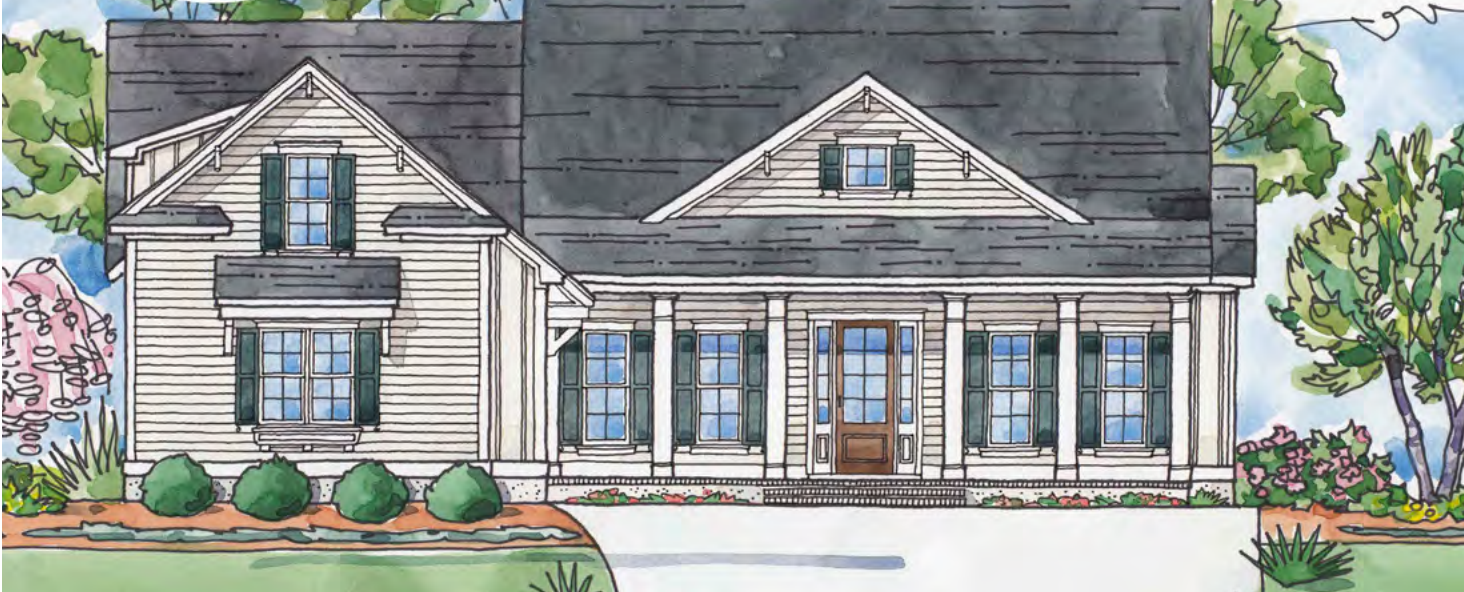
© copyright Hagood Homes





VIEW PHOTOS AND VIDEO OF THIS PLAN

PORTSMOUTH ISLAND
 4 Bedrooms
 3 1/2 Baths
 2581 Square Feet



PORTSMOUTH ISLAND

First Floor Heated Square Footage: 2176
 Bonus Room Heated Square Footage: + 405
 Total Heated Square Footage: 2581
 Width 58'0" • Depth 90'6"

© copyright Hagood Homes



PORTSMOUTH ISLAND
Angled Garage
 4 Bedrooms
 3 1/2 Baths
 2620 Square Feet



PORTSMOUTH ISLAND *Angled Garage*



First Floor Heated Square Footage: 2200
 Bonus Room Heated Square Footage: +400
 Total Heated Square Footage: 2620
 Width 77'5" • Depth 91'0"

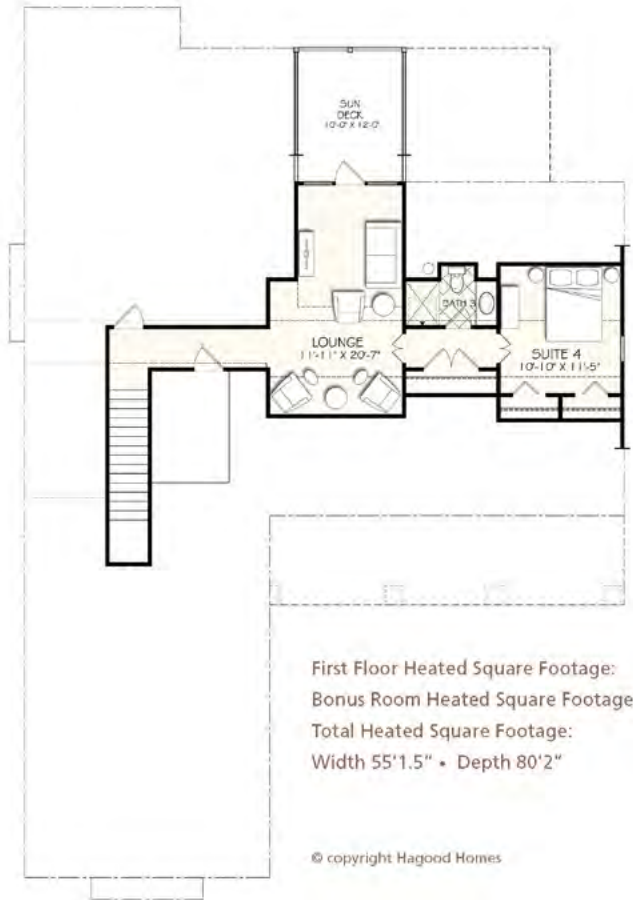


VIEW PHOTOS AND VIDEO OF THIS PLAN

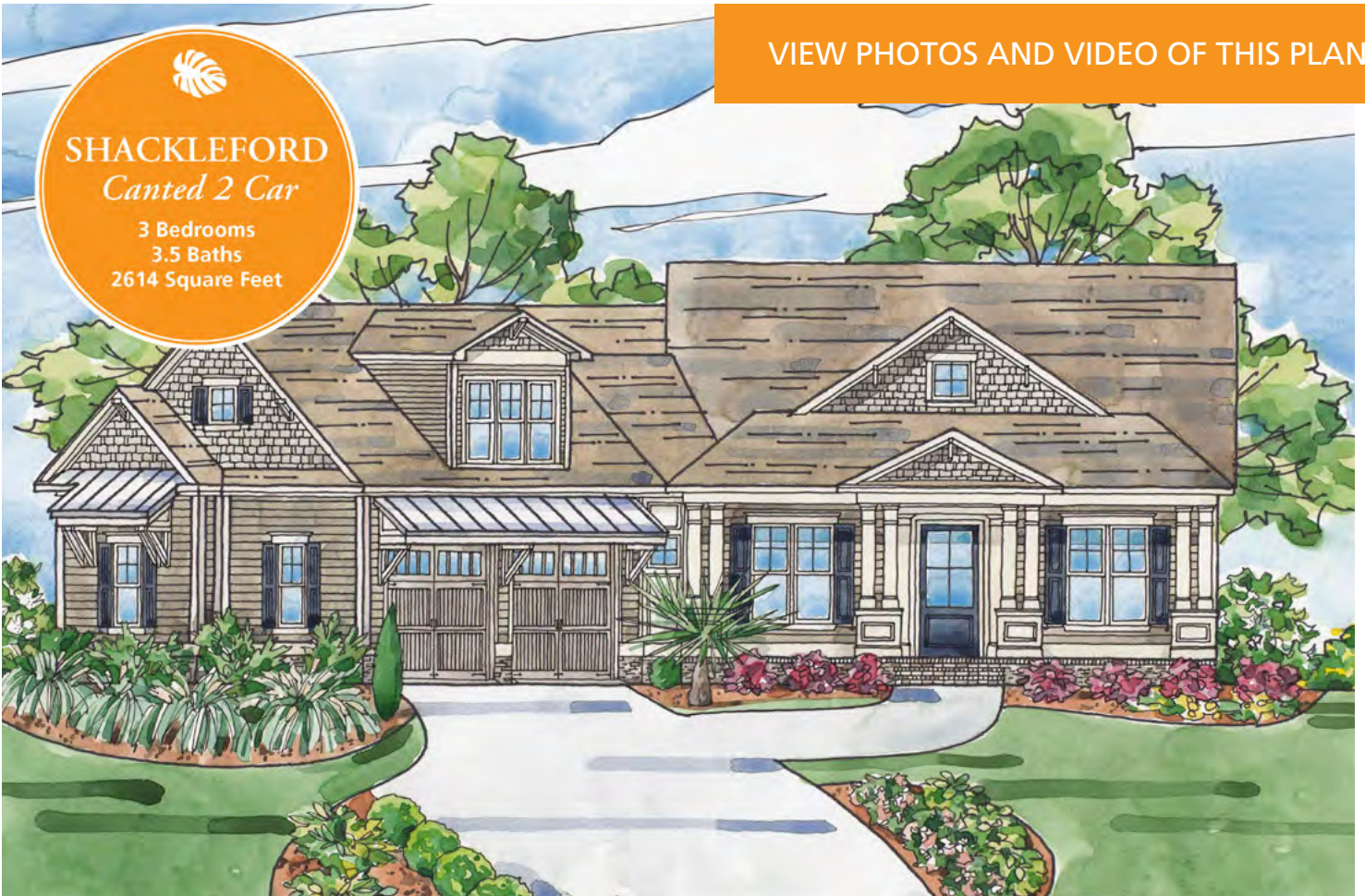
**SHACKLEFORD
BANKS**
Alternate
4 Bedrooms
3.5 Baths
2648 Square Feet



SHACKLEFORD BANKS *Alternate*



VIEW PHOTOS AND VIDEO OF THIS PLAN



SHACKLEFORD
Canted 2 Car
3 Bedrooms
3.5 Baths
2614 Square Feet

SHACKLEFORD BANKS *Canted 2 Car*



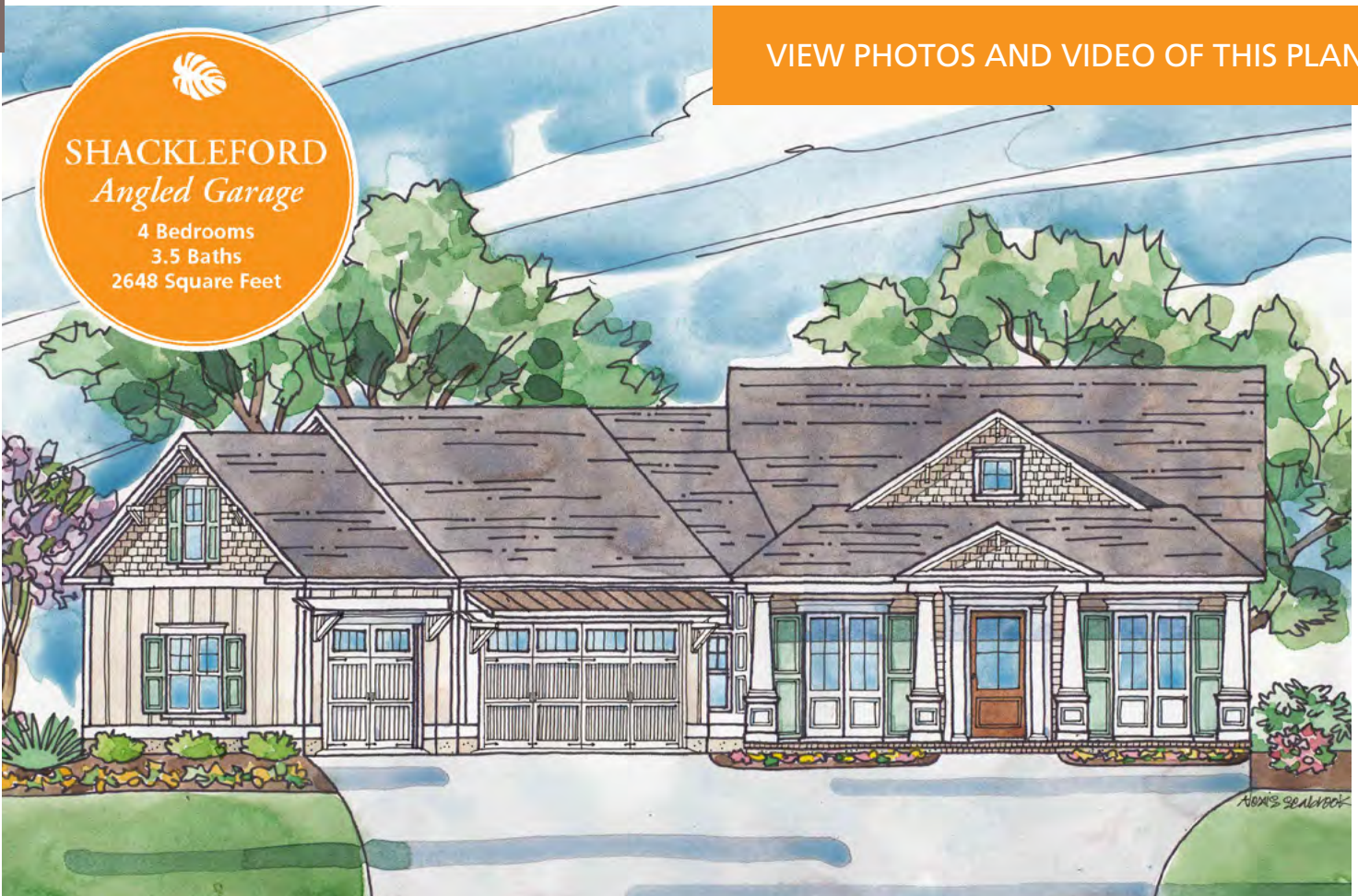
First Floor Heated Square Footage: 2111
Bonus Room Heated Square Footage: + 503
Total Heated Square Footage: 2614
Width 69' 9" • Depth 79' 8.25"

© copyright Hagood Homes



VIEW PHOTOS AND VIDEO OF THIS PLAN

SHACKLEFORD
Angled Garage
 4 Bedrooms
 3.5 Baths
 2648 Square Feet



SHACKLEFORD BANKS *Angled Garage*



First Floor Heated Square Footage: 2143
 Bonus Room Heated Square Footage: + 505
 Total Heated Square Footage: 2648
 Width 74'7" • Depth 85'10"

© copyright Hagood Homes



VIEW PHOTOS AND VIDEO OF THIS PLAN



**SHACKLEFORD
BANKS**
Courtyard
4 Bedrooms
3.5 Baths
2427 Square Feet

SHACKLEFORD BANKS *Courtyard*

First Floor Heated Square Footage: 2023
Bonus Room Heated Square Footage: + 403
Total Heated Square Footage: 2427
Width 55'0" • Depth 78'2"

© copyright Hagood Homes





VIEW PHOTOS AND VIDEO OF THIS PLAN

**SHACKLEFORD
BANKS**
front load
4 Bedrooms
3 Baths
2405 Square Feet



SHACKLEFORD BANKS



First Floor Heated Square Footage: 1913
 Second Floor Heated Square Footage: + 492
 Total Heated Square Footage: 2405
 Width 56'3¹/₂" • Depth 70'6¹/₂"

© copyright Hagood Homes



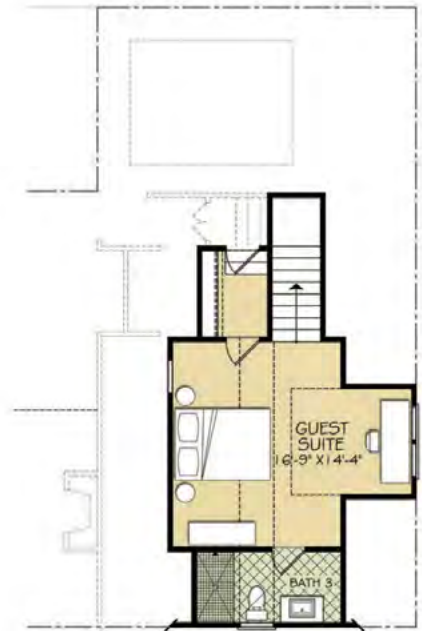


SHELTER COVE

4 Bedrooms
3 Baths
1941 Square Feet



SHELTER COVE



First Floor: 1627 SQ FT
Guest Suite: 314 SQ FT
Total Heated Square Footage: 1941 SQ FT
Width 57' 1 1/2" • Depth 51' 4"



VIEW PHOTOS AND VIDEO OF THIS PLAN

SHELTER COVE
dbl Bonus
 4 Bedrooms
 3 Baths
 2151 Square Feet



SHELTER COVE - Double Bonus



First Floor: 1627 SQ FT
 Guest Suite: 524 SQ FT
 Total Heated Square Footage: 2151 SQ FT
 Width 57' 1/2" • Depth 51' 4"

© copyright Hagood Homes

VIEW PHOTOS AND VIDEO OF THIS PLAN



SMITH CREEK

4 Bedrooms
4 Baths
2580 Square Feet



SMITH CREEK



First Floor Heated Square Footage:
Bonus Room Heated Square Footage:
Total Heated Square Footage: 2580
Width 40' • Depth 91'

© copyright Hagood Homes



VIEW PHOTOS AND VIDEO OF THIS PLAN

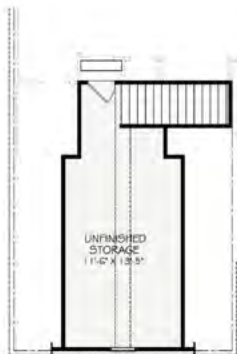
St. Croix
 3 Bedrooms
 3 1/2 Baths
 2,318 Square Feet



St Croix

First Floor Heated Square Feet:
 2,041 Walk-in Storage Square Feet:
 273 Optional Lounge Heated Square Feet:
 27739' x 81'

© copyright Hagood Homes

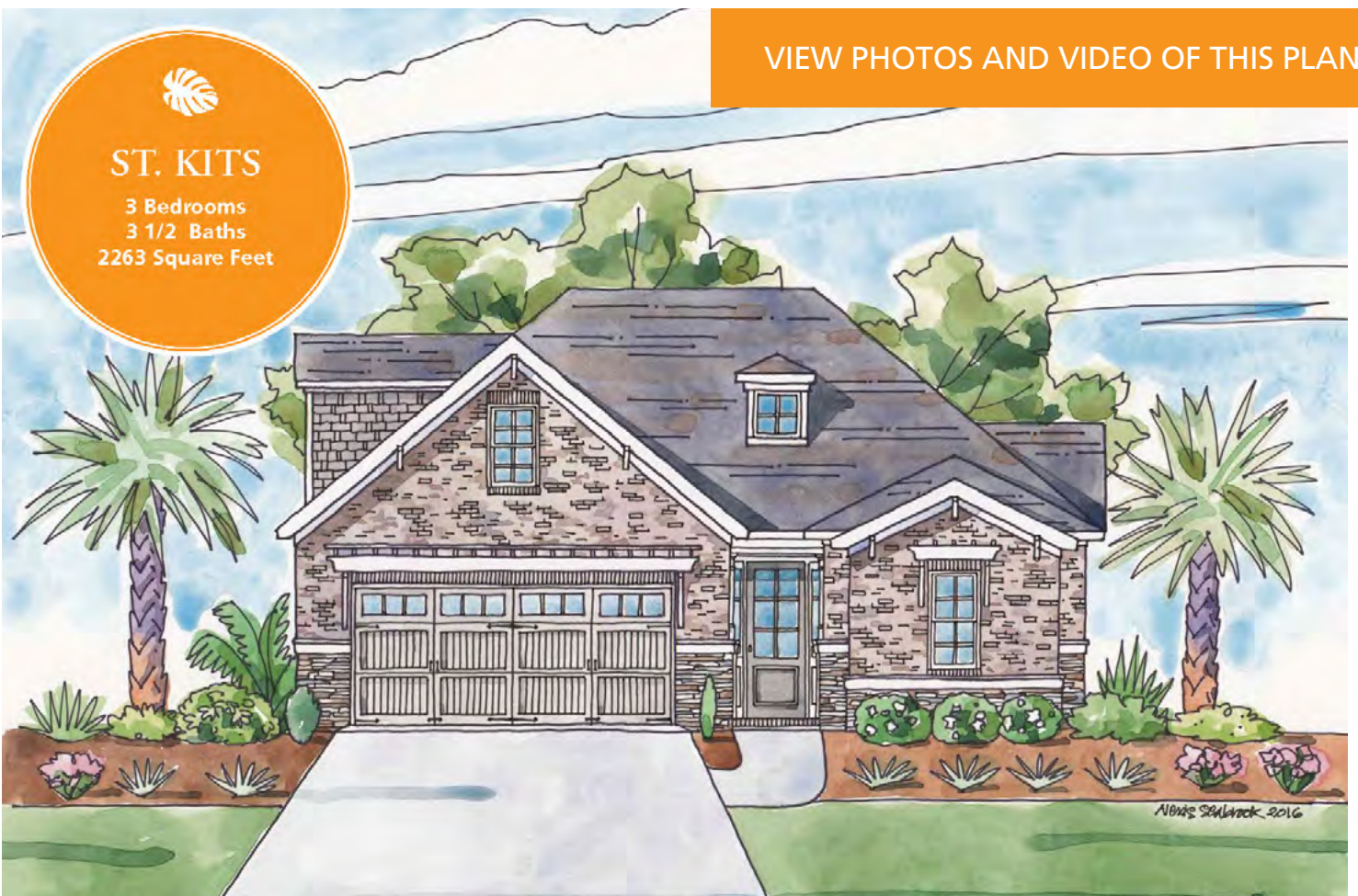


VIEW PHOTOS AND VIDEO OF THIS PLAN

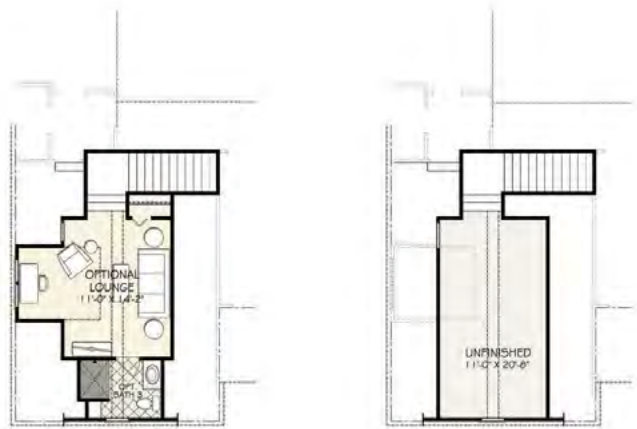


ST. KITS

3 Bedrooms
3 1/2 Baths
2263 Square Feet



ST. KITS



First Floor Heated Square Footage: 1985
Optional Lounge Heated Square Footage: + 278
Total Heated Square Footage: 2263
Width 39'0" • Depth 92'0"

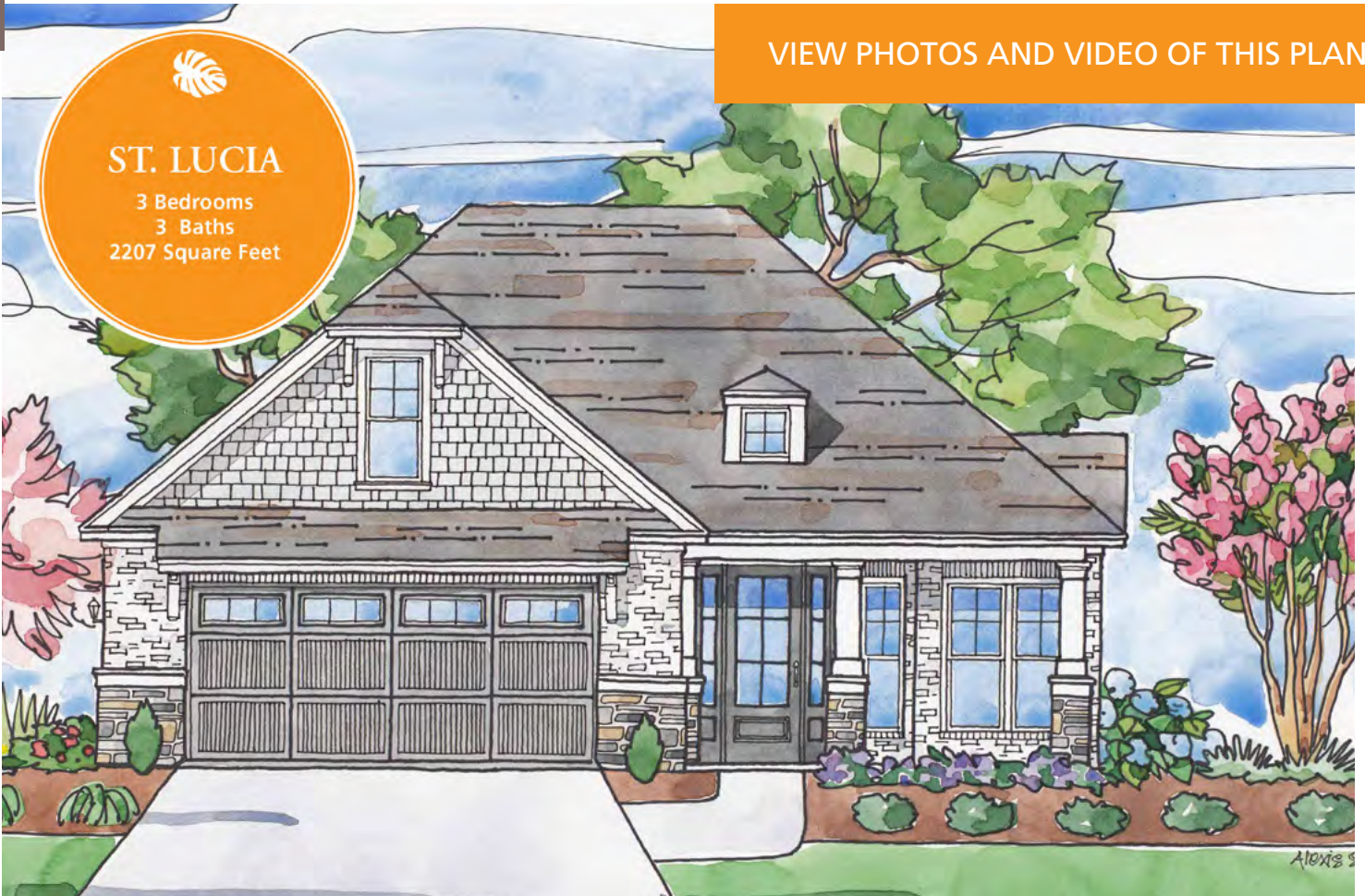
© copyright Hagood Homes



VIEW PHOTOS AND VIDEO OF THIS PLAN

ST. LUCIA

3 Bedrooms
3 Baths
2207 Square Feet



ST. LUCIA

First Floor Heated Square Footage: 1892
Bonus Room Heated Square Footage: 298
Total Heated Square Footage: 2207
Width 39' 0" • Depth 72' 6"

© copyright Hagood Homes



Upper Floor plan



The CABANA



VIEW PHOTOS AND VIDEO OF THIS PLAN

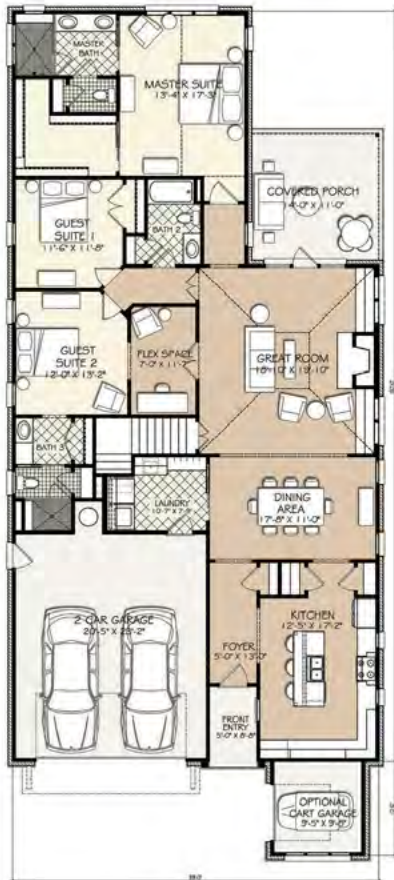


ST. MAARTEN

3 Bedrooms
3 Baths
2598 Square Feet



ST. MAARTEN



First Floor Heated Square Footage: 2273
Optional Lounge Heated Square Footage: + 325
Total Heated Square Footage: 2598
Width 39'0" • Depth 90'0"

© copyright Hagood Homes



VIEW PHOTOS AND VIDEO OF THIS PLAN



**SUNSET
RETREAT**
3 Bedrooms
3.5 Baths
2683 Square Feet



SUNSET RETREAT

First Floor Heated Square Footage: 2271
 Bonus Room Heated Square Footage: + 412
 Total Heated Square Footage: 2683
 Width 72'0" • Depth 86'0"

© copyright Hagood Homes

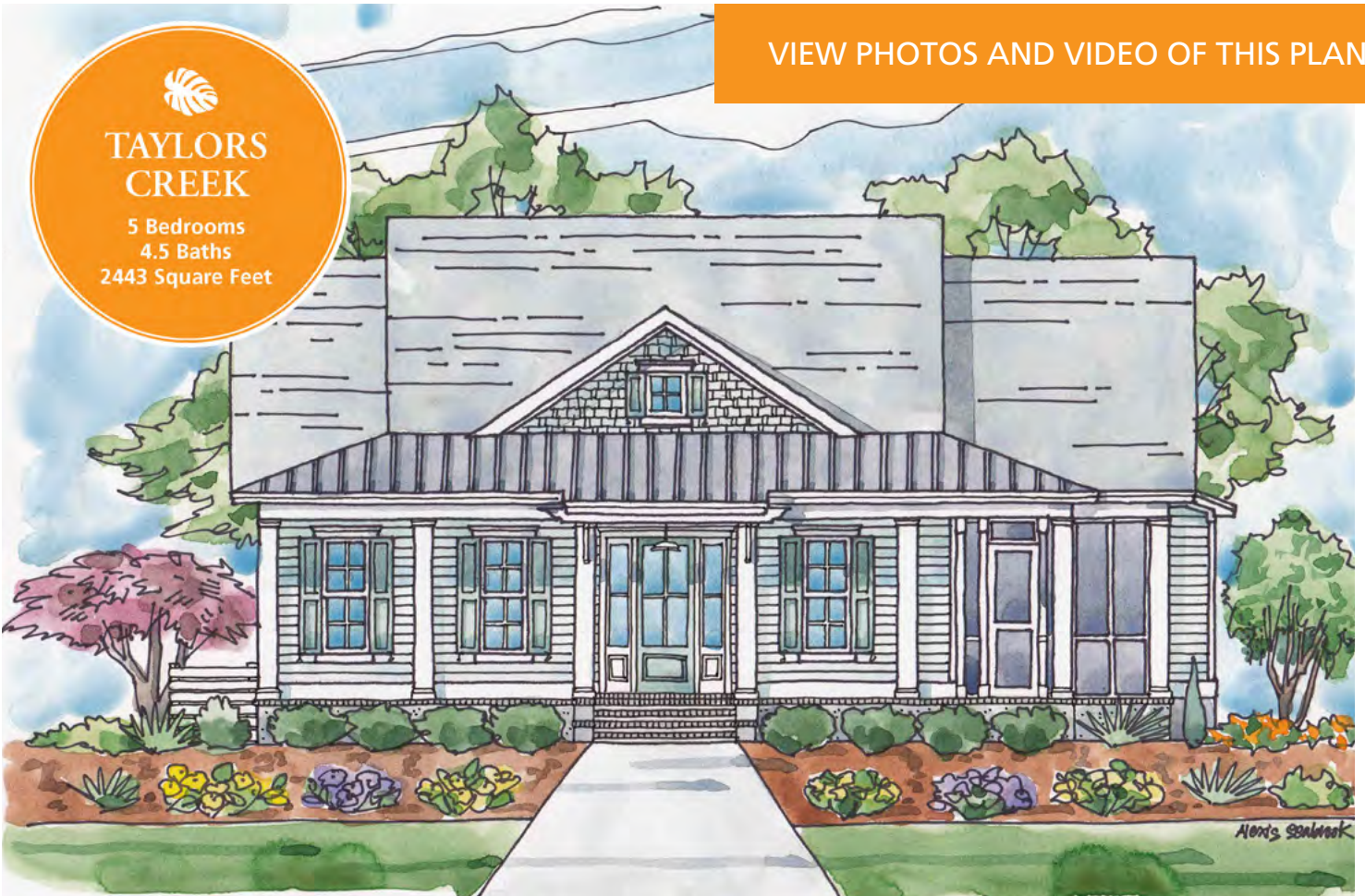


VIEW PHOTOS AND VIDEO OF THIS PLAN



TAYLORS CREEK

5 Bedrooms
4.5 Baths
2443 Square Feet



TAYLORS CREEK



First Floor Heated Square Footage: 2004
Bonus Room Heated Square Footage: +439
Total Heated Square Footage: 2443
Width 49'3.5" • Depth 86'11"

© copyright Hagood Homes

} Lounge 2 is optional



VIEW PHOTOS AND VIDEO OF THIS PLAN



WOODS COVE I
4 Bedrooms
3.5 Baths
2525 Square Feet

Catherine's Cove



WOODS COVE I - *Catherine's Cove*



First Floor Heated Square Footage: 2151
 Upper Floor Heated Square Footage: + 374
 Total Heated Square Footage: 2525
 Width 59'0" • Depth 60'8"

© copyright Hagood Homes

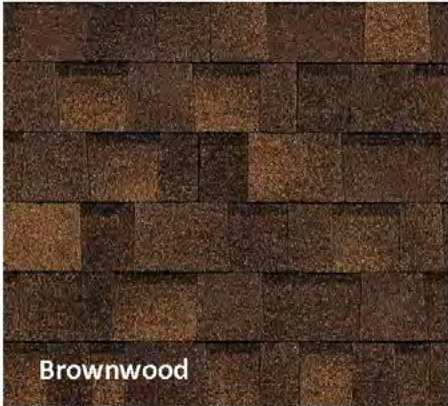


Upper Floor plan



EXTERIOR

Included Shingle Colors



Subject to change

EXTERIOR

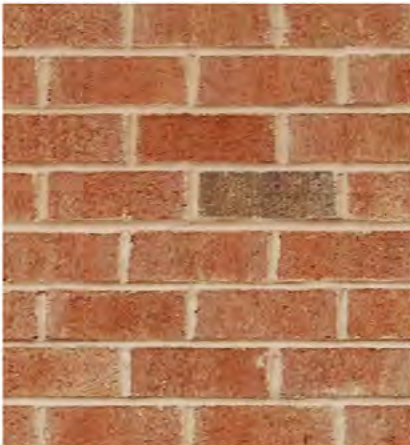
Included Brick



Dover White



Northampton



Old South



Southampton



Bessemer Grey



Included Carpet Options

True Honor



Weeping Willow



Warmest Grey



Embers



Dorian



Classic Silver



Brownstone

FLOORING

Top Card II

Included Carpet Options



Celtic Haze



Cloudland



Crystal Ball



Dark Pewter



Elephant



Enchanted



Folklore



Harmonious



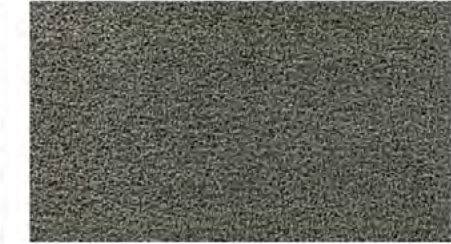
Harvest



Latte



London Fog



Meteorite



Moonlight Jade



Path Finder



Picnic

Subject to change



FLOORING

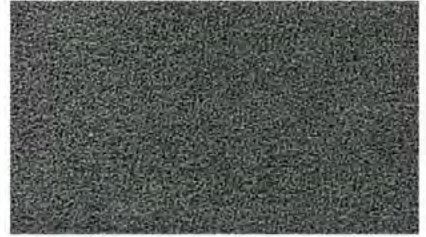
Top Card II Cont.



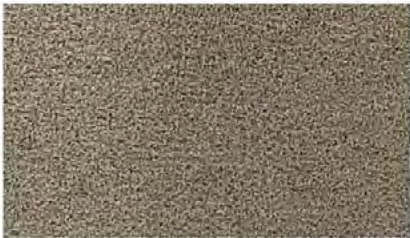
Sandcastle



Secret Cove



Serenade



Starlight



Tradition

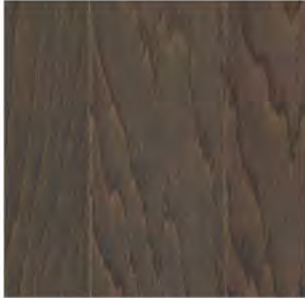


Wilderness

FLOORING

Included Hardwood Options

Willows Bay 5"



Oak Shale



Oak Wool



Red Oak Natural



Oak Stonewash



Oak Golden



Oak Autumn



Oak Cherry



Oak Oxford

Weatherby Birch



Burlap Birch



Tobacco Birch



Java Birch



Graphite Birch

About Our Wood Floors:

Our included wood selections are all TecWood, an engineered wood product built to resist expansion and contraction due to humidity. Varieties in this line include Oak, Walnut, Maple, Hickory, and Birch.



Included Hardwood Cont.

Cafe Dream



Dolce Oak



Froth Oak



Chai Oak



French Roast Oak



Fusion Oak

FLOORING

Included Laminate Options

Driftwood Collective



Sand Dune



Canyon Clay



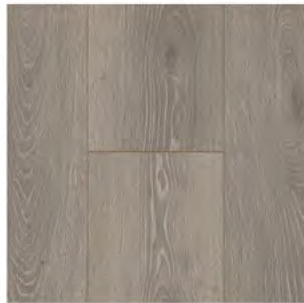
Silver Shadow



Boathouse Brown

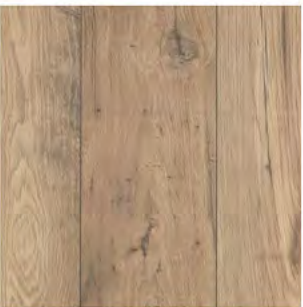


Gulf Sand

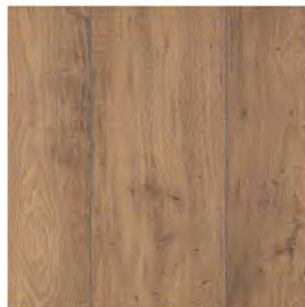


Graphite

Rustic Manor



Fawn Chestnut



Cedar Chestnut



Knotted Chestnut



Earthen Chestnut



Included Laminate Cont.

Rustic Vision



Sandcastle Oak



Driftwood Oak



Doeskin Chestnut



Silverstone Chestnut



Ashlar Oak

CABINETS

Included Cabinet Options

Carolina Choice From Integrity
Standard Overlay Program:

OXFORD MAPLE



FAIRMONT MAPLE



AYDEN MAPLE



Paints:

INCLUDED FINISHES



WHITE

IVORY

BISTRO
WHITE

BISQUE

ICY MINT

GRIT

FOG

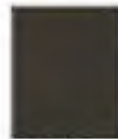
PEBBLE
GRAY



JADE



GRAPHITE



SADDLE



GALAXY



DENIM
BLUE



BLUE
SMOKE



ADMIRAL
BLUE

Stains (SHOWN ON MAPLE UNLESS NOTED):



CAPPUCCINO

COFFEE

EBONY

ESPRESSO

GINGER

LIGHT



MEDIUM



NATURAL



NUTMEG



SMOKE



WEATHERED
(MAPLE ONLY)



CABINETS



CAROLINA CHOICE STANDARD CONSTRUCTION FOR CATHERINE'S COVE	
Face Frame	3/4" X 1 3/4" Stiles And Rails, Joined Using Glue And Wood Screws
End Panels, Backs, Tops & Bottoms	1/2" Particleboard With Laminated Natural Birch Woodgrain Interior And Matching Laminated Exterior
Shelves	3/4" Particleboard, Laminated Natural Birch Woodgrain On Both Sides. Matching PVC Edgebanding On Front Edges. Adjustable, 1/2" Depth
Kitchen Standards:	
Drawer Box:	5/8" Solid Wood Sides And Ends, Uv Clear Coat, Dovetail Joints, 1/4" Plywood Bottom, Dado Fitted Into Sides And Ends.
Drawer Guides:	Full Extension, Concealed Undermount, Soft Close Drawer Guide, Height Adjustment, 75 Lb Capacity
All Other Room's Standards:	
Drawer Box:	5/8" Solid Wood Sides And Ends, Uv Clear Coat, Dovetail Joints, 1/4" Plywood Bottom, Dado Fitted Into Sides And Ends.
Drawer Guide:	Full Extension, Concealed Undermount, Soft Close Drawer Guide, Height Adjustment, 75 Lb Capacity
Hinges For All Areas	Soft Close, Concealed Cup Hinge. 110 Degree Opening. 6-way Adjustable



Subject to change

CABINETS

ISLAND WITH CABINET MATCHING SQUARE LEGS, SHIPLAP BACK PANELS, AND SHAKER BASEBOARD STANDARD.



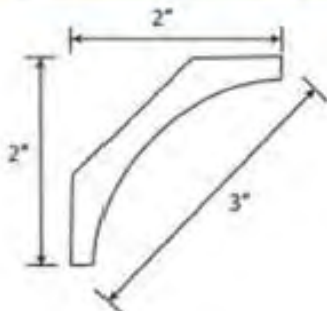
DOUBLE TRASH PULLOUT INCLUDED



PEGGED DISH ORGANIZER INCLUDED



STANDARD COVE CROWN & BEVEL LIGHT RAIL





COUNTERTOPS

Included Granite Level 1



Azul Platino



Black Pearl



Caledonia



Bianco Antico



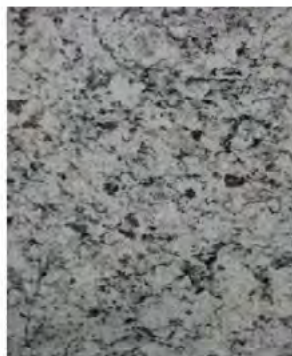
Luna Pearl



New White Waves



Mont Blanc



Moonlight



Santa Cecilia Light



Uba Tuba



Thunder White



Viscont White

Subject to change

COUNTERTOPS

Included Kitchen Quartz 3cm Level 1



Basalt Gray



Graphite



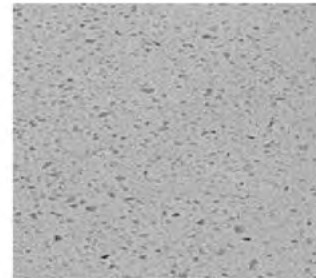
Artic White



New Willow White



Sugar White



Pebble Gray



Carrara Marmi



COUNTERTOPS

Included Quartz

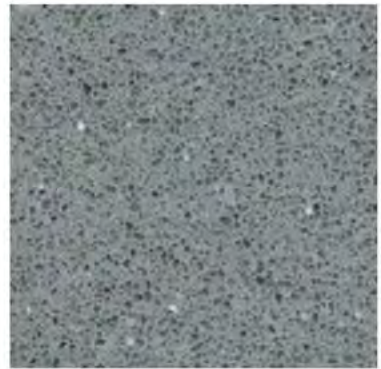
Level 1 (1.6cm):



Blanco Matrix

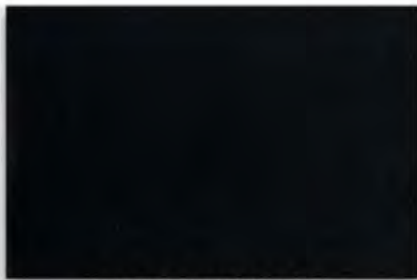


Blanco City

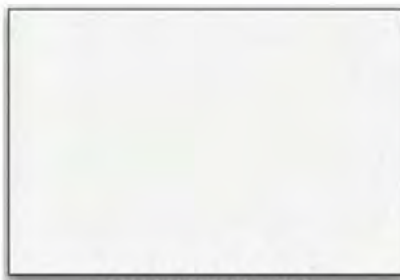


Grey Expo

Level 2 (2cm):



TEBAS BLACK 2CM

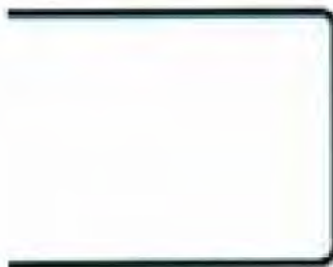


MIAMI VENA 2CM



HELIX 2CM

Included Granite Edge Profiles



Eased Edge



Single Roundover



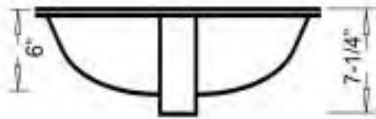
Small Bevel

UNDER-MOUNT SINK OPTIONS

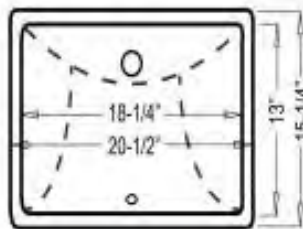


SCOOP

Front View

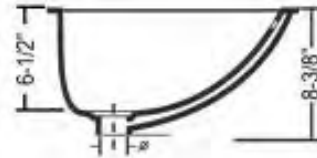


Top View

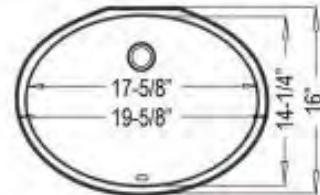


LOTUS

Side View



Top View



Upgrade



Included



PLUMBING

Included Plumbing Fixtures

Kitchen:



Moen Brantford Chrome



McAllister 32" 50/50



60/40 Stainless Bowl



Single Bowl

Subject to change

PLUMBING

Included Plumbing Features Cont.

Master Bath:



Moen Brantford Two
Handle High Arc

Moen M6345 Rainhead



Moen MT2151 Shower Valve



PLUMBING

Included Plumbing Features Cont.

Bath Two and Three:



Moen Brantford Two Handle High Arc



Moen Brantford Postiemp Tub/Shower

Half Bath/Laundry Room:



Half Bath
Moen
Brantford
Two Handle High Arc

Half Bath
ProFlo
Libson Valley Pedestal Sink

Subject to change

Included Tile Options: Popular Selections

Daltile Balans



Daltile Costar



American Olean Danya





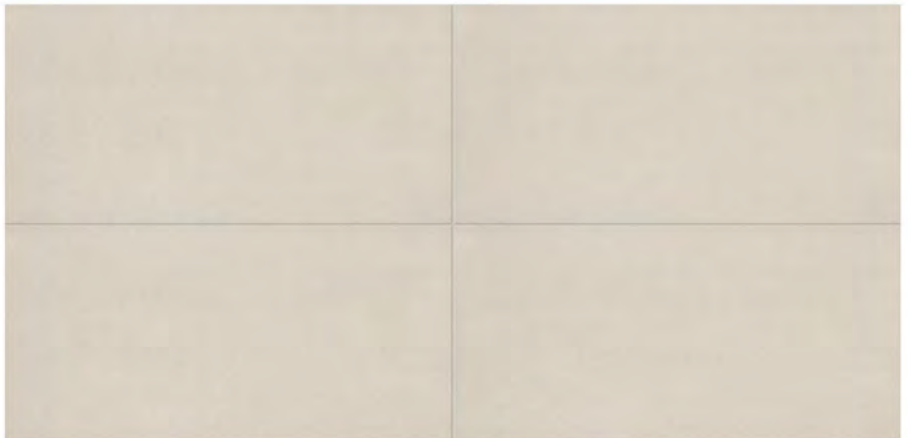
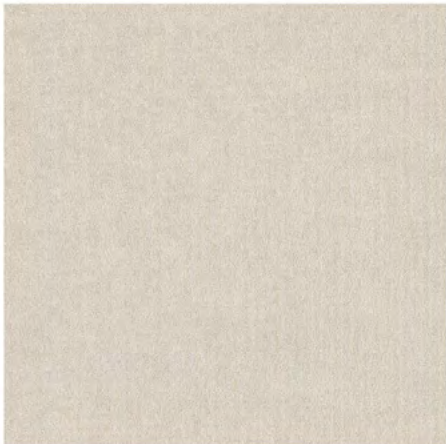
TILE

Included Tile Options: Popular Selections

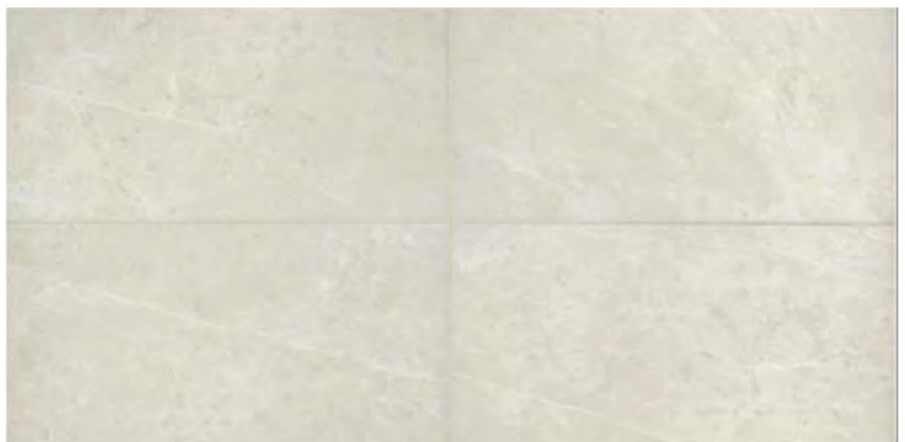
Daltile Cape Coast



Daltile Koncrete



Daltile Resilience



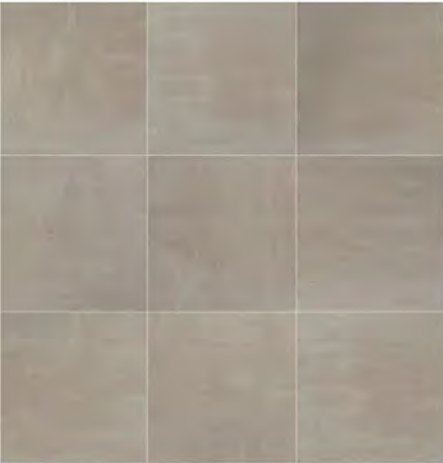
TILE

Included Tile Options: Popular Selections Continued

American Olean Danya



Daltile Skybridge



American Olean Mirasol



More Included Options Available

Subject to change



TILE

Included Tile Backsplash

Many Tile Options Available



Subject to change

ACCESSORIES

Included Mirrors

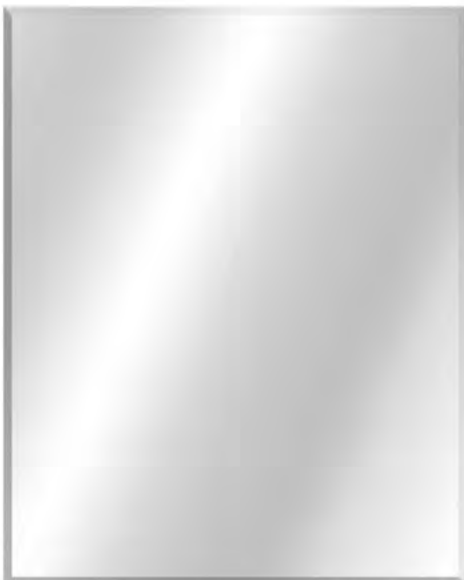
Master Bath: Lighted Mirrors



Bath Two: Framed Mirror



Additional Bathrooms: Beveled Mirror



Or





Included Decorative Electrical

Great Room, Master Bedroom, and Guest Bedrooms



Basics Revisted Collection 52" Ceiling Fan
White



Basic Revisted Collection 52" Ceiling Fan
Brushed Nickel



Basics Revisted Collection 52" Ceiling Fan
Satin Natural Bronze

ACCESSORIES

Included Decorative Electrical Continued

Lounge



Progress Lighting 42" Fan
White Washed Oak



Progress Lighting 42" Fan
Brushed Nickel



Progress Lighting 42" Fan
Antique Bronze



Light Kit
White



Light Kit
Brushed Nickel



Light Kit
Antique Bronze



Included Decorative Electrical Continued

Screened Porch



Basics Revisited 52" Ceiling Fan
White



Basics Revisited 52" Ceiling Fan
Satin Black



Basics Revisited 52" Ceiling Fan
Satin Natural Bronze



Light Kit
White



Light Kit
Satin Black



Light Kit
Tannery Bronze

Live Better...



H A G O O D | H O M E S
established 1996

Lumina Station, 1908 Eastwood Road, Suite 328, Wilmington, NC 28403
910.256.8284 | hagoodhomes.com